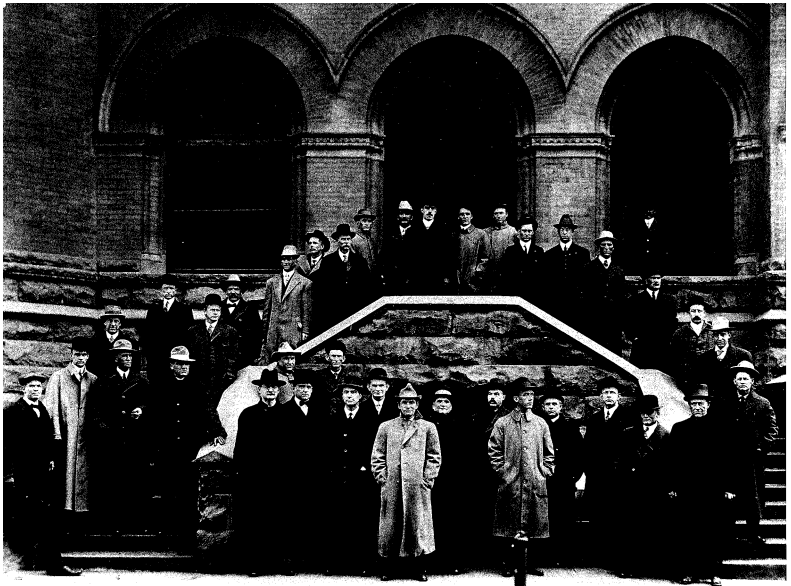
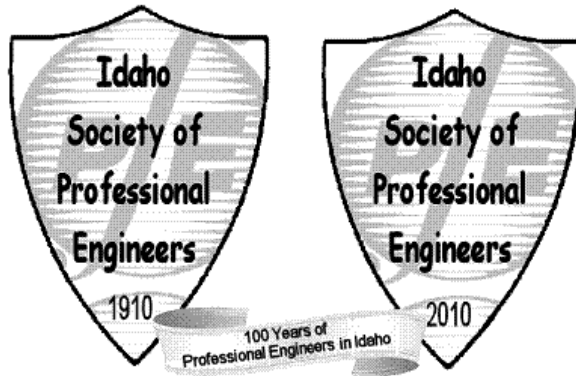


*100th ANNIVERSARY
IDAHO SOCIETY OF
PROFESSIONAL ENGINEERS*



**100th Anniversary
June 11, 2010
Boise, Idaho**

**100TH ANNIVERSARY & ANNUAL MEETING CONTRIBUTORS
PLATINUM LEVEL (\$300 AND UP)**



B&A Engineers, Inc.
Consulting Engineers & Surveyors



Engineering
INCORPORATED



GEOTEK



Stanley Consultants INC.

ISPE SOUTHWEST CHAPTER



WALKER
Engineering, P.C.



GOLD LEVEL (\$200 AND UP)

Joe Canning, P.E.

SILVER LEVEL (\$100 AND UP)

Sherwin (Sam) Barton, P.E.

John J. Harper, P.E.

William F. Johnson



BRONZE LEVEL (\$50 AND UP)

George F. Eidam, P.E.

ANNUAL MEETING COMMITTEE

Jim Baker

Joe Canning

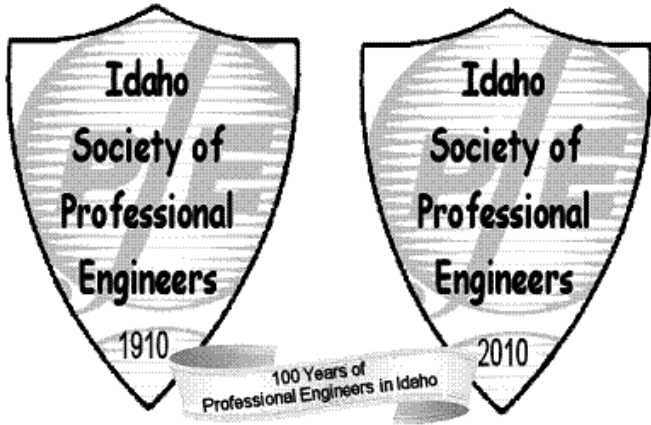
Bill Johnson

Katey Levihn

Lynn Olson

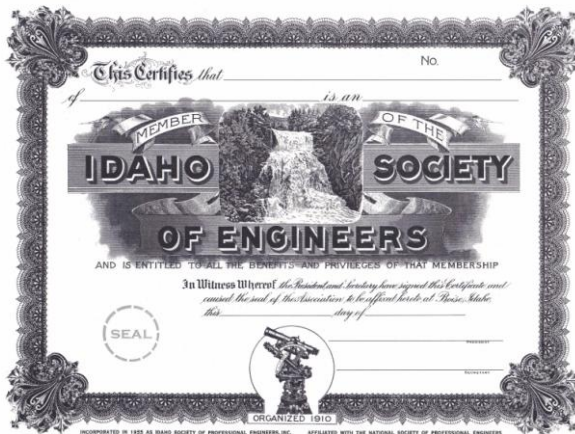
Julie Wall

Program Footnote: Much effort was made to compile the history of ISPE; however this document is not complete and may contain errors. It was a challenge to find available records for some years. As memories have faded and witnesses have passed, the materials left behind often provide conflicting accounts of names and dates. Please contact ISPE if you find any errors so these records can be updated. What is most important is not always these inaccuracies but rather the events that have taken place to make this great organization.



FRIDAY JUNE 11, 2010 – ISPE 100TH ANNIVERSARY

| | |
|-----------|---|
| 5:30-6:30 | Social “Meditation” Hour |
| 6:30-6:45 | Opening and Invocation |
| 6:45-7:15 | Awards: Young Engineer of the Year Engineering Excellence Educator Engineering Excellence (2) |
| 7:15-8:15 | 100 th Anniversary ISPE Presentation |
| 8:15-8:20 | NSPE Fellow Presentation |
| 8:20-8:30 | 2010-2011 ISPE Officer Inductions |
| 8:30 | Closing Remarks |
| 8:30-9:00 | Group Photos |





Lynn M. Olson, P.E.

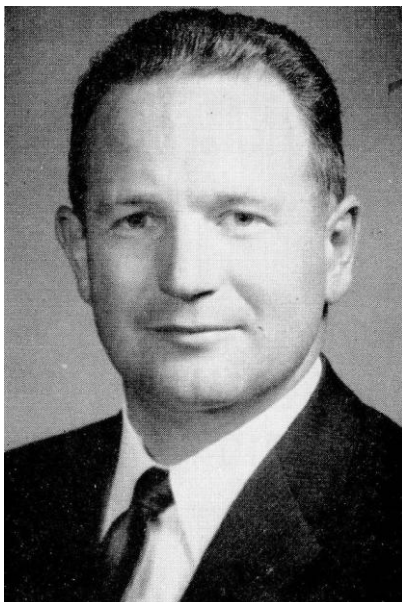
President Idaho Society of Professional Engineers
July 2009 – July 2010

Pride in Idaho Professional Engineering at 100

Early in life one is apt to view the world through events that have occurred only in their lifetime. Though, with maturity, one begins to have a growing appreciation for the accomplishments of the past and for the people who are responsible for them. As I look back on the history of ISPE and the contributions of its members to Idaho and the engineering profession, I am even more proud to be a part of this great organization. My wish is that as you read through the names of those that have served the engineering profession through ISPE you too will be both inspired and proud to be an ISPE member and a professional engineer. As earlier ISPE membership cards quoted Charles Dickens, "It is well for a man to respect his own vocation whatever it is, and to think himself bound to uphold it and to claim it for the respect it deserves".

In order for ISPE to celebrate another anniversary, a renewed sense of pride from members is needed. Times change and as a professional engineer and member of ISPE, I challenge you with helping to shape the future of both organizations. Only with members becoming more involved by serving as officers or committee members will ISPE's continue for another 100 years as an organization that serves all professional engineers.

Lynn M. Olson, P.E.
June 11, 2010



Sumner M. Johnson P.E.

President Idaho Society of Professional Engineers
February 1959 – February 1960

Your Part – 50th Anniversary

It is with great pride that we review the advancement of the engineering profession over the last fifty years and see the important part that our Idaho Society of Professional Engineers has contributed to this effort.

As you review this fiftieth anniversary publication I am certain you will reflect that as our Society has grown, so has the stature of the professional engineer grown. But let us not live on the laurels of the past.

We as a Society, in the interest of all mankind, as well as the engineering profession, should be looking at new horizons and even greater goals of professional development. Therefore, I charge each and every one of you, as members of the engineering profession, to accept the responsibility and do your part in the advancement of professionalism.

Sumner M. Johnson, P.E.
February 1960



Darwin A. Utter

Founder of Idaho Society of Professional Engineers

Darwin A. Utter founder and first President of the Idaho Society of Professional Engineers, came west in 1889 and settled in Weiser, He engineered the original Weiser power, water, and sewer systems and adjacent irrigation works. In 1908, Engineer Utter was appointed Surveyor General of Idaho. While serving as Surveyor General, he made a study of desirable changes to improve methods for the survey of public lands which had been in use for over a hundred years. He was virtually the author of the law which governs the practice at the present. Brass cap markers for corners and surveys by government forces rather than by contract were two of the changes made. In 1913, he was employed by a syndicate to spend several months in the Orient and Philippines to investigate and report on natural resources. In 1916, he accepted the office of Deputy U.S. Land Commissioner at Mountain Home and had an office there for the balance of his life.

Prior to the Spanish American War, Engineer Utter was commissioned as a secret service agent for the U.S. Government. In that capacity, he visited all the important seaports in the world.

W. Purdy Eaton, P.E.
February 1960

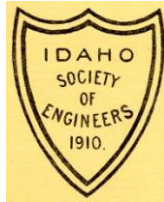
ISPE STATE PRESIDENTS 1910-2009

| <u>PRESIDENT</u> | <u>YEAR(S)</u> | <u>PRESIDENT</u> | <u>YEAR(S)</u> |
|-----------------------|----------------|------------------------|----------------|
| Darwin A. Utter | 1910-11 | Thomas R. Spalding | 1971 |
| Dan G. Martin | 1912 | Keith E. Stokes | 1972 |
| John P. Congdon | 1913 | Dale L. Riedesel | 1973 |
| Ernest G. Eagleson | 1914 | Wendell A. Higgins | 1974 |
| Barry Dibble | 1915 | William A. Sylvies | 1975 |
| Fred Wilkie | 1916 | Richard Day/Les Walker | 1976 |
| Wil Gibson | 1917 | Wallace N. Cory | 1977 |
| Will Owen Cotton | 1918 | Charles E. Brockway | 1978 |
| G. C. Scharf | 1919 | James L. Pline | 1979 |
| Inactive Period | 1920-36 | Robert R. Furgason | 1980 |
| John P. Congdon | 1937 | Norm Dahm | 1981 |
| William P. Hughes | 1938-39 | Dewitt 'Tal' Neill | 1982 |
| William Percy Havenor | 1940 | Sherman A. Nelson | 1983 |
| Raymond J. Briggs | 1941-44 | Scott McClure | 1984 |
| Clyde P. Humphrey | 1945 | David K. Bennion | 1985 |
| James Reid | 1946 | William P. Barnes | 1986 |
| Lloyd E. Stalker | 1947 | Fred K. Clements | 1987 |
| Orland C. Mayer | 1948-49 | John J. Harper | 1988 |
| Allen S. Janssen | 1950-51 | William J. Ancell | 1989 |
| Ellis L. Mathes | 1952 | Gary L. Young | 1990 |
| Jay E. Painter | 1953 | William A. Smith | 1991-92 |
| Gerald A. Riedesel | 1954 | John J. Brown | 1993 |
| Clifford C. Hallvik | 1955 | Steve Walker | 1994 |
| Joseph Lattimore | 1956 | Joseph D. Canning | 1995 |
| Earl C. Reynolds | 1957 | Charles Bergmann | 1996 |
| Franklin E. Smith | 1958 | Larry M. Fettkether | 1997 |
| Sumner M. Johnson | 1959 | James A. DeShazer | 1998 |
| Leif Erickson | 1960 | Nestor Fernandez | 1999 |
| Walt Smith | 1961 | John J. Bennion | 2000 |
| James W. Martin | 1962 | Ms. Sharon Parkinson | 2001 |
| Robert W. Underkofler | 1963 | Clifford I. Roberts | 2002 |
| Robert B. Christensen | 1964 | Ms. Karen M. Doherty | 2003 |
| Archie L. Biladeau | 1965 | David R. Schiess | 2004 |
| Robert E. Smith | 1966 | Stephen B. Loop | 2005 |
| Earl E. Haroldsen | 1967 | Kenneth W. Hasfurther | 2006 |
| Austin B. Milhollin | 1968 | James S. Baker | 2007 |
| George R. Russell | 1969 | Terry A. Harwood | 2008 |
| George F. Eidam | 1970 | Ms. Lynn M. Olson | 2009 |

TIMELINE – ISPE & PROFESSIONAL ENGINEERS IN IDAHO

Early Days of Idaho Society of Engineers

1908 First meeting in Boise to discuss the need for a society called by Darwin Utter.



- 1910 Idaho Society of Engineers founded, 1st Annual Meeting in Boise.
1911 Meeting in Twin Falls w/143 members & trip to Salmon Dam.
1912 4 day Meeting in Boise w/174 members, trip to Arrowrock, and start of ISPE legislative activities to enact Civil Engineers Law.
1913 100 members meet in Weiser w/field trip by special train to Oxbow Hydroelectric Power Device on the Snake River.
1913-8 Attempted legislation by ISE for Engineering Law, blocked by Governor and miners.
1916 Annual Meeting held in Burley.
1917 Boise holds Annual Meeting.
Ira Shaffner and Don Davis help ISE issue 10 bound and illustrated monthly newsletters free to all members.
1918/19 Civil Engineers Law Enacted in Idaho – Administered by Department of Law Enforcement (no mining engineers).

Idaho Chapter of American Association of Engineers



- 1919 November 21st - ISE receives a charter as a chapter of the American Association of Engineers (AAE).
1919-30 Idaho Chapter runs under AAE.
1930-37 AAE and Idaho Chapter dissolve, last ISE Secretary, Captain Ernest Flag Ayres of Boise Ayres Bookshop holds ISE funds.

Idaho Society of Engineers Re-formed

- 1936 7 engineers meet in Boise to discuss reorganizing ISE and extraction from AAE led by Raymond Briggs and John Congdon.
1937 ISE Adopted Amended Constitution & By-laws & Original Pin.
1938 3 ISE Chapter Sections setup (North, Southwest and Southeast). ISE prepares the "Engineers Registration Act" to present to 1939 legislature to form Idaho State Board of Engineering Examiners.
1939 "Idaho Engineer Law" replaced the Civil Engineers Law and recognizes the Professional Engineer for the first time in Idaho. Idaho State Board of Engineering Examiners formed (ISBEE). Salary Study compares Engineers in Idaho to other states. State of Idaho Publishes List of 14 Licensed Professions.

TIMELINE – ISPE & PROFESSIONAL ENGINEERS IN IDAHO

- 1939 287 active engineering licenses (up to #494), registration \$4/yr.
1940 ISE Committee to the Idaho State Planning Board studies and presents recommendations for merit pay systems for state employees.
151 members of ISE out of 291 active licenses (through #510).



- 1941 ISE Annual meeting touted as “Greatest show ever put on in Boise” to commemorate the Boise Air Base (Gowen Field). Semi formal Engineers Ball dinner dance w/400 people on March 22 at a cost of \$1.50 per person.
Measure fails to put engineering employees in State Highway Department under Merit System.
ISE grows to 169 members from 293 license holders
- 1942 Raymond Briggs forms the ISE President’s Council made up of all living past presidents of the Society.
ISE Amends Constitution and By-laws on January 17, 1942.
ISE members contribute \$30 each to help finance a Public Works Commission Act designed to place the Highway Department under bi-partisan management and establish Merit System for all employees in that department.
Due to World War II and gas rationing, only held Annual meeting and no Board meetings and encouraged chapter meetings.
- 1943 Final Draft of the “Public Works Commission Act” was approved by members but postponed until after the end of the War.
Attempt made to replace head of Highway Engineering Department with unlicensed man. ISPE formed a committee to protest against men not qualified under Idaho Engineer’s Law from assuming engineering duties in the Department of Public Works by any such lengths as required including criminal prosecution if necessary and with any ISE funds on hand.
- 1945 Edward Larson, Executive Secretary of NSPE addresses ISE special meeting explaining the purpose and objectives of NSPE.
Public Works Commission Act presented to the State Affairs Committee but dies in committee.
State-wide meetings resumed w/September meeting in Pocatello
321 licensed engineers in Idaho (through #586).
- 1946 Committee appointed to study labor union activities in organizing engineers.
Steps outlined to make the Society available as a “Bargaining Agency” for Engineers if such things become desirable.
337 active license engineers (through #604).

TIMELINE – ISPE & PROFESSIONAL ENGINEERS IN IDAHO

- 1947 Committee report urged affiliation with NSPE after May 1947 address by NSPE Executive Director Paul Robbins. Another attempt to pass Public Works Commission Act fails. Registration \$5/year for 373 engineers (up to #651).

Idaho Society of Professional Engineers

- 1948 Special meeting to receive the charter from Alex Van Praag, NSPE President on August 6, 1948.



- 1948 ISPE Charter date September 1, 1948, officially joining NSPE. Name change to Idaho Society of Professional Engineers (ISPE). Newsletter launched to call engineers attention to happenings of the engineering field in general and Idaho in particular. 4 member ISPE committee studies engineer fee/salary schedules. ISE Pres. Orland Mayer note in ISBEE Yearbook on Engineering. American Engineer, NSPE publication, now to ISPE members.
- 1949 Legislature authorizes a study of the State Highway Department. This action attributed to ISPE'S determined efforts to have the Highway Department taken out of politics. 10 years of ISBEE. - ISPE & NSPE Notes in Annual Report on Engineering and Engineering Organizations.
- 1950 ISPE 3 day Annual Meeting custom started w/panel discussion on the recently released "Highway Report". 448 engineers in Idaho (through # 742). ISPE Pres. Allen Janssen note in ISBEE Yearbook on membership.
- 1951 Highway Act enacted by Legislature following recommendations of Highway Report. Result a Board of Directors w/a law very similar to the Public Works Commission Act triggered by ISPE. First National Engineers Week during 3rd full week in February. Message to 458 engineers from ISPE in the ISBEE Annual Report.
- 1952 A recommended minimum fee and salary schedule for Engineers was adopted, published and distributed. ISPE approves the South Central Chapter on March 15, 1952. ISPE & NSPE messages to 479 engineers in ISBEE Annual Report.

TIMELINE – ISPE & PROFESSIONAL ENGINEERS IN IDAHO

- 1953 ISPE South Central Chapter chartered on January 1, 1953. Orland C. Mayer recognized by ISPE for his service & leadership. ISPE recognized Dr. David B. Steinman, bridge designer & early member of the ISE, who taught at the University of Idaho College of Engineering from 1910-1914 before founding NSPE in 1934. January 1953 ISPE fee schedule for engineering services released. By now 819 licensees granted w/494 active professional engineers & messages from ISPE/NSPE in ISBEE on professionals.
- 1954 Jess Buchanan recognized for contributions to the profession. ISPE Board of Directors now elected officials of society as representatives from chapters took over routine business. ISPE Salary Study Committee Report accepted. 15 years of registration & 556 professional engineers in Idaho. ISPE message “It Means a lot to be an Engineer” in ISBEE Report. Engineers Creed adopted from NSPE Board of Ethical Review.
- 1955 ISPE became incorporated under the Laws of Idaho. ISPE Publishes a Member Services Directory for civil, electrical, mining, mechanical, and chemical engineers for the public. Message on ethics and joining ISPE to 610 ID professional engrs.
- 1956 Consultants’ functional group Professional Engineers in Private Practice (PEPP) later Consulting Engineers of Idaho (CEI) & American Council Engineering Companies of Idaho 1st organized. Membership and Articles of Incorporation of ISPE printed. ISPE publishes another Member Services Directory for the public. ISPE retained permanent legal counsel on a retainer basis. ISPE salary study and society made available to aid any engineer or group of engineers in obtaining better compensation. Resolution passed which enumerated desirable procedure to be followed to improve on present land survey practices. Attempts to remove ISBEE & form one Board of Licensing for all. Half of 642 PEs in ID are ISPE members. ISPE Ladies Auxiliary started in Idaho.
- 1957 Legislation failed for a referendum vote to change the office of County Surveyor from an elected to an appointed office and setting up qualifications for surveyor. Idaho Engineers Law amended to include mining engineers. County Zoning Law enacted. Discussions on changing engineering exam from written to oral. ISPE Publishes another Member Services Directory for the public. 120 engineers attend annual meeting in Boise. ISPE Articles of Incorporation amended. Membership contest held in 1957. 356 members out of 670 PEs. ISPE Quarterly Newsletters mailed out to members. ISPE message in ISBEE on professional engineer responsibility.
- 1958 ISPE message engineer professional status a mark of distinction. 395 ISPE members out of 800 licensed professional engineers.
- 1959 20 years of engineering licensing under ISBEE, review by RJ Briggs.

TIMELINE – ISPE & PROFESSIONAL ENGINEERS IN IDAHO

- 1959 ISPE printed Articles of Incorporation and membership roster. ISPE Publishes another Member Services Directory for public. 849 PEs registered in ID at \$10/year, 442 ISPE members.
- 1960 ISPE celebrates its Golden Anniversary in Boise. 177 engineers attended and received a small pocket knife with a swing blade inscribed with ISPE Golden Anniversary – 1960 and copy of the Historical Publication of ISPE First 50 Years.



- 1960 ISPE winner of NSPE Area Membership Contest.
1960 Salary Survey
408 ISPE members from 890 registered professional engineers.
- 1961 Idaho Professional Engineer Magazine circulation reaches 1000 with 4 issues printed a year at 35 cents an issue.
ISPE winner of NSPE Area Membership Contest 2nd year in a row.
ISPE dues are \$23/year and include a membership card.
ISPE Articles and Membership Roster printed for 1961.
Engineering in Training exam a new requirement around 1961.
Professional Engineer in Industry Practice Division is organized.
- 1962 ISPE Special Commendation Committee investigates ways to provide proper recognition of Idaho Engineers & acknowledge contributions of Raymond Briggs to the profession. Developed award to top Idaho score on new EIT exam from 1961 to 1970 and then later in recognition of Allen Janssen from 1971 to 1978.
- 1963 ISPE South Central Chapter renamed the Magic Valley Chapter on October 25, 1963.
Modern NSPE Code of Ethics is adopted.
- 1964 A premier slide show shown @ Boise Junior College by ISPE SW Chapter describing Professional Engineering in Idaho
ISPE Dues \$28/year.
- 1965 Circulation of the Idaho Engineers magazine reaches 1500
ISPE Articles and Membership Roster printed for 1965.
Professional Engineers in Education Practice Division is formed.
- 1966 Cost of Annual Meeting in Boise just \$4!
ISPE had 22 active committees.

TIMELINE – ISPE & PROFESSIONAL ENGINEERS IN IDAHO

- 1966 Approximate time that Mrs. Robert Griffiths became the first woman accepted as a member of ISPE as a draftsman.
- 1967 Discussions on making Idaho Historical Society a depository for ISPE historical materials. Little information in collection today.
- 1968 \$28 Dues for ISPE, NSPE starts *The American Engineer* magazine. Idaho administers the first NCEES Fundamental of Engineering (FEE) and NCEES Professional Engineering Exams in December. Prior to using the NCEES exams the exams were State prepared and graded.
The American Engineer magazine becomes *Professional Engineer*. Proposed NSPE By-law change strives to make registration more meaningful in terms of acknowledgment of individual achievement & encourages engineers to seek license earlier.
- 1969 Active ISPE Chapter at Idaho State University.
Membership drive as all members try to recruit one more engineer with dues \$30/year.
- 1971 Malati Charyulu believed to be first female registered professional engineer in Idaho.
- 1972 Printed Articles of Incorporation Revised By-Laws & Policies. National Reactor Testing Station Chapter started at what is now the Idaho National Laboratory – Chapter existed for 4 years. Combined job of ISPE State Secretary and Treasurer. 1594 engineers licensed in Idaho (through # 2421)
Publication of *The Idaho Engineer* ends in the Fall of 1972. ISPE Legislative work on the Idaho Engineers Injunction Bill. Nearly 500 ISPE members.
- 1973 Number of Idaho PEs reaches 1690 active (through #2564).
- 1974 Membership Roster printed in 1974 sent to all Idaho Counties, Contractors, architectural firms and ISPE members.
Professional and Technical Societies meet and to learn “How engineers can more effectively lobby.” Central committee of 5 organizations (ASCE, ACEC, AIA, IEEE & ISPE) formed to offer aid.
- 1975 The Idaho Professional Engineer Newsletter printed by ISPE with news, list of new PEs and new members and a message from ISPE. NSPE begins publication of NSPE News, a newsletter, until 1992. Past ISPE Officer and member Lyman Wilbur recognized by NSPE as National Outstanding Engineer of the Year
- 1976 ASCE produces Engagement Calendar celebrating Engineering in Idaho as part of the bicentennial celebration.
Membership campaign to Recruit One Professional Engineer or ROPE a success increasing membership from 299 to 450.
- 1977 ISPE State Junior Regional Director position started.
- 1978 NSPE establishes a bipartisan Political Action Committee from member contributions.
In *United States v. NSPE*, NSPE argues before the U.S. Supreme Court to preserve NSPE Code of Ethics provisions banning competitive bidding of engineering services. The high court ruled against NSPE.

TIMELINE – ISPE & PROFESSIONAL ENGINEERS IN IDAHO

- 1979 First issue of *Engineering Times* from NSPE provides engineers with “a broad scope of interpretive reporting and commentary on the issues and events that members in the engineering profession have in common, across all technical disciplines.”
- 1982 ISPE Membership Roster printed
- 1984 Robert Nobis is the first Professional Land Surveyor on the State Licensing Board who was not also a P.E.
First National MATHCOUNTS competition held.
- 1987 Idaho Liability Reform Coalition formed.
- 1988 ISPE Foundation formed to support and promote engineering educational activities and scholarships.
- 1989 ISPE Newsletter the *Integrator* sent out to Southwest Chapter.
- 1989-90 ISPE members donate engineering and time to design and build the Discovery Bridge connecting the Discovery Center to Julia Davis Park and the Greenbelt. The bridge won an Award of Merit from the American Institute of Timber construction in the Pedestrian/Light Vehicular Bridge category in 1990 Engineered Timber Bridge Competition.



- 1990 ISPE develops a centennial display commemorating a century of engineering progress in Idaho that travels the state.
Discovering Engineering Week educational outreach program
- 1992 First National Future City Competition held.
- 1993 Merriam-Webster’s Collegiate Dictionary adds “professional engineer” under its “PE” entry in the 10th addition thanks to a letter writing campaign by NSPE including ISPE members.
- 1994 NSPE calls for mandatory continuing professional competency for PEs.
- 1995 State Leadership Training in Twin Falls.
ISU Student Chapter has 25 members.
NSPE website www.nspe.org launches

TIMELINE – ISPE & PROFESSIONAL ENGINEERS IN IDAHO

- 1996 Outstanding Boise State Student Awards restarted at Southwest Chapter Engineering Week Luncheon and continue today
- 1997 ISPE Officer Training offered in 1997.
Annual Meeting includes a trip to Jackpot with a Dinner Show.
- 1998 Idaho Qualifications Based Selection (QBS) Council formed after the passage of a new state law that requires Idaho cities and counties to select on this basis when hiring a professional engineer.
- 2000 ISPE Annual Meeting includes panel presentation on telecommuting.
- 2001 50th Anniversary of National Engineers Week.
Last ISPE Salary Survey.
ISPE/NSPE membership requirements added (only PEs and EITs)
- 2002 ISPE Strategic Plan with 5 goals set to preserve ISPE's mission.
ISPE Connections Newsletter sent out until Spring 2004.
ISPE membership certificates reissued to all members.
- 2003 NSPE begins offering online ethics seminars.
ISPE Brochure developed with Mission Statement, Top Ten Reasons to Join and more information.
ISPE starts its website now www.IdahoSPE.org.
- 2004 ISPE began looking at delinking from NSPE or possibilities of State only membership.
- 2005 ISPE Friday Updates e-newsletter sent to ISPE members with state and chapter news along with a MATHCOUNTS problem.
First Idaho Regional Future City Competition held.
- 2006 PE Magazine launched & replaces Engineering Times from NSPE.
- 2007 ISPE develops White Paper on Continuing Education Requirements for Engineers in Idaho.
- 2008 ISPE CPD Committee review draft legislation and provide comments to the Registration Board on CPD requirements.
ISPE hosts meetings to inform engineers of upcoming professional development requirements following changes to Idaho Code that give the Licensing Board authority to require for engineers.
- 2009 ISPE Board Meetings start using Skype rather teleconference.
ISPE Statewide Meeting on Continuing Professional Development (CPD) requirements in combination with the Licensing Board.
CPD requirements enacted for Professional Engineers in Idaho upon their next renewal after July 2009.
- 2009-10 ISPE coordinates with Licensing Board, ACEC, and ISPLS regarding License Board Composition and Nomination Process.
- 2010 ISPE Participating in committee meetings and discussions on issue of practice overlap between engineers and architects.
ISPE review proposed Board changes to Survey language in Idaho Code and provides comments to the Licensing Board.
100th Anniversary of ISPE celebrated at Boise Annual Meeting.

ISPE CHARTER MEMBERS

| | |
|-------------------|-----------------|
| A.N. Ashline | S.K. Atkinson |
| Murray D. Badgley | E.V. Berg |
| S. D. Clinton | John P. Congdon |
| Will Owen Cotton | Barry Dibble |
| S.A. Easton | Robert M. Ednie |
| Henry Homming | Walter Heyde |
| Fred W. Kiefer | W. G. Sloane |
| James Spottford | S.E. Vance Jr. |

ISPE HONORARY LIFETIME MEMBERS

| | |
|--------------------------|------------------------------|
| 1950 – Harry W. Morrison | 1953 – Dr. David B. Steinman |
| 1958 – Henry F. Gauss | 1958 – J. Hugu Johnson |
| 1962 – W.P. Hughes | 1964 – Raymond J. Briggs |

ISPE AWARDS

ENGINEERING HALL OF FAME

Award recognizes Idahoans who have made contributions to regional, national, or globally significant engineering accomplishments or the profession.

| | | | |
|------|-------------------------|------|----------------------|
| 2008 | James L. Pline | 2007 | Wendell A. Higgins |
| 2007 | Sumner M. Johnson | 2007 | Walter H. Smith |
| 2004 | Ellis L. Mathes | 2004 | Lyman D. Wilbur |
| 2003 | Sherwin M. "Sam" Barton | 2003 | Earl C. Reynolds Jr. |
| 2002 | George R. Russell | 2002 | Keith E. Anderson |
| 2000 | Harry W. Morrison | | |

EXCELLENCE IN ENGINEERING

Award recognizes a person who has distinguished themselves with excellence within the engineering profession.

| | | | |
|------|--------------------|------|---------------------------------------|
| 2010 | William F. Johnson | 2010 | Scott McClure |
| 2008 | Jerry W. Eggleston | 2007 | Roger R. Bissell |
| 2007 | Les Walker | 2006 | Jerry A. Peterson |
| 2006 | Gary L. Young | 2005 | David K. Bennion |
| 2004 | James A. Higgins | 2004 | Dale L. Riedesel |
| 2003 | William J. Ancell | 2000 | Wendell A. Higgins (1 st) |

EXCELLENCE IN ENGINEERING EDUCATOR

Award recognizes an engineering educator who has had a significant impact on the engineering profession in Idaho.

| | | | |
|------|---------------------|------|---------------------|
| 2010 | Robert Hamilton | 2007 | Richard T. Jacobsen |
| 2006 | Charles L. Peterson | 2005 | Habib Sadid |
| 2004 | Norman F. Dahm | 2004 | Dewitt "Tal" Neill |
| 2004 | James H. Milligan | | |

ISPE AWARDS

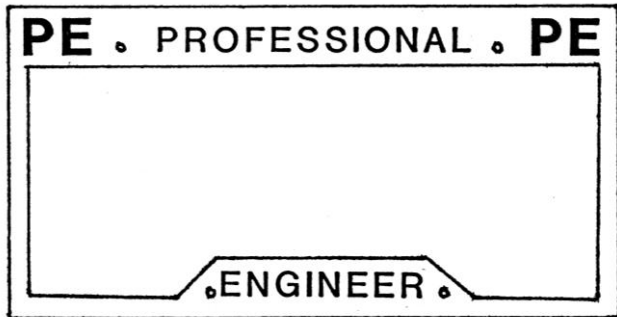
YOUNG ENGINEER AWARD

Award recognizes young ISPE members who have made outstanding contributions to the engineering profession and their communities during the early years of their careers.

| | |
|----------------------------|--------------------------|
| 2010 – Jenny Bush | 2007 - Chris Canfield |
| 2006 - Lynn M. Olson | 2005 - Robert S. Palus |
| 2004 - Heather M. Carroll | 2003 - William H. Holder |
| 2002 - Doug Camenisch | 2001 - Karen Doherty |
| 2000 - Gregory Cotton | 1999 - Betsy Roberts |
| 1998 - Sharon E. Parkinson | 1993 - E. "Bud" McArthur |
| 1992 - Kevin Nielsen | 1979 – Tom Krumsick |
| 1978 - Wayne Pickerill | 1977 – William Smith |
| 1976 – David Bennion | 1975 – Jack Hammond |
| 1974 – Ralph Kangas | 1973 – Roger Bissell |
| 1972 – Richard Day | 1971 – Wallace Cory |
| 1970 – Richard Kanemasu | 1969 – Dale Riedesel |
| 1968 – Charles Brockway | 1967 – Robert Ferguson |
| 1966 – John Eskelin | 1965 – Keith Stokes |
| 1964 – George Eidam | |

SPECIAL AWARDS

1961 – Raymond J. Briggs – ISPE Citation for Distinguished Service
1971 – Sumner Johnson – ISPE Citation for Outstanding Service
1974 – James L. Pline – NSPE Membership Award, Group II
1976 – William Sylvies – NSPE Membership Award, Group II
1975 – Lyman Wilbur – NSPE Outstanding Engineer Award
1977 – Sherwin Barton – ISPE Award for serving on the Idaho State Board of Engineering Examiners from 1962 – 1977



Professional Engineer License Plate Covers Sold by Auxiliary

ISPE STATE OFFICERS (1910-19, 1937-2009)

Office Key: P – President PE – President Elect
 S - Secretary T –Treasurer
 S/T – Secretary/ Treasurer D – Director
 RD – Regional Director JD – Jr Regional Director

| <u>YEAR</u> | <u>NAME</u> | <u>OFFICE</u> | <u>NAME</u> | <u>OFFICE</u> |
|-------------|--------------------|---------------|--------------------------|---------------|
| 1910 | Darwin A. Utter | P | | |
| | Gordon Smith | S | Sam Clinton | T |
| 1911 | Darwin A. Utter | P | Dan G. Martin | PE |
| | Gordon Smith | S | Charlie Mull | T |
| 1912 | Dan G. Martin | P | A. E. Robinson | PE |
| | Ira F. Shaffner | S | Edward Hedden | T |
| 1913 | John P. Congdon | P | R. J. Wood | PE |
| | Ira F. Shaffner | S | Edward Hedden | T |
| 1914 | Ernest G. Eagleson | P | R. J. Wood & W.O. Cotton | P/PE |
| 1915 | Barry Dibble | P | | |
| 1916 | Fred Wilkie | P | | |
| 1917 | Wil Gibson | P | | |
| 1918 | W.O. Cotton | P | | |
| 1919 | G.C. Scharf | P | Captain Ernest F. Ayres | T |

1920-1936 INACTIVE PERIOD

| | | | | |
|------|-------------------------|---|--------------------|----|
| 1937 | John P. Congdon | P | William P. Havenor | PE |
| | Raymond Briggs | S | Frank K. Hummell | T |
| 1938 | William P. Hughes | P | William P. Havenor | PE |
| | Raymond Briggs | S | Frank K. Hummell | T |
| 1939 | William P. Hughes | P | William P. Havenor | PE |
| | Raymond Briggs | S | Frank K. Hummell | T |
| 1940 | William P. Havenor | P | E. Buchanan | PE |
| | Jim Morris & W.P. Eaton | S | J.P. McMenemy | T |
| 1941 | Raymond J. Briggs | P | J.M. Johnson | PE |
| | W. Purdy Eaton | S | Sydney Harris | T |
| 1942 | Raymond J. Briggs | P | L.E. Stalker | PE |
| | W. Purdy Eaton | S | Sydney Harris | T |
| 1943 | Raymond J. Briggs | P | Clyde P. Humphrey | PE |
| | W. Purdy Eaton | S | H.C. Clare | T |
| 1944 | Raymond J. Briggs | P | Clyde P. Humphrey | PE |
| | W. Purdy Eaton | S | H.C. Clare | T |
| 1945 | Clyde P. Humphrey | P | James Reid | PE |
| | W. Purdy Eaton | S | H.C. Clare | T |
| 1946 | James Reid | P | L.E. Stalker | PE |
| | W. Purdy Eaton | S | Archie L. Biladeau | T |
| 1947 | L.E. Stalker | P | Orland C. Mayer | PE |
| | Virgil E. Johnson | S | Archie L. Biladeau | T |
| 1948 | Orland C. Mayer | P | Allen S. Janssen | PE |
| | James L. Morris | S | Archie L. Biladeau | T |
| 1949 | Orland C. Mayer | P | Allen S. Janssen | PE |
| | James L. Morris | S | Archie L. Biladeau | T |

ISPE STATE OFFICERS (1910-19, 1937-2009)

| <u>YEAR</u> | <u>NAME</u> | <u>OFFICE</u> | <u>NAME</u> | <u>OFFICE</u> |
|-------------|-----------------------|---------------|-----------------------|---------------|
| 1950 | Allen S. Janssen | P | H. R. Flint | PE |
| | James L. Morris | S | Archie L. Biladeau | T |
| | Orland C. Mayer | D | | |
| 1951 | Allen S. Janssen | P | Ellis L. Mathes | PE |
| | Karsten R. Bronkin | S | Archie L. Biladeau | T |
| | Orland C. Mayer | D | | |
| 1952 | Ellis L. Mathes | P | Jay E. Painter | PE |
| | W. Purdy Eaton | S | Sherwin M. Barton | T |
| | Orland C. Mayer | D | | |
| 1953 | Jay E. Painter | P | Gerald A. Riedesel | PE |
| | W. Purdy Eaton | S | Sherwin M. Barton | T |
| | Leigh M. Huggins | D | | |
| 1954 | Gerald A. Riedesel | P | Clifford C. Hallvik | PE |
| | W. Purdy Eaton | S | Sherwin M. Barton | T |
| | Leigh M. Huggins | D | | |
| 1955 | Clifford C. Hallvik | P | Joseph H Lattimore | PE |
| | Del Leroy Andrews | S | Austin Milhollin | T |
| | Ellis Mathes | D | | |
| 1956 | Joseph H Lattimore | P | Earl C. Reynolds Jr. | PE |
| | Walter H. Smith | S | Philip Marsh | T |
| | W. Purdy Eaton | D | | |
| 1957 | Earl C. Reynolds Jr. | P | Franklin E. Smith | PE |
| | Walter H. Smith | S | Sherman N. Weisgerber | T |
| | W. Purdy Eaton | D | | |
| 1958 | Franklin E. Smith | P | Sumner M. Johnson | PE |
| | Walter H. Smith | S | Sherman N. Weisgerber | T |
| | Clifford C. Hallvik | D | | |
| 1959 | Sumner M. Johnson | P | Leif F. Erickson | PE |
| | Walter H. Smith | S | Sherman N. Weisgerber | T |
| | Clifford C. Hallvik | D | | |
| 1960 | Leif F. Erickson | P | Walter H. Smith | PE |
| | Sherman N. Weisgerber | S | Harold L. Lackey | T |
| | Earl C. Reynolds Jr. | D | | |
| 1961 | Walter H. Smith | P | James W. Martin | PE |
| | Sherman N. Weisgerber | S | Harold L. Lackey | T |
| | Earl C. Reynolds Jr. | D | | |
| 1962 | James W. Martin | P | Robert W. Underkofler | PE |
| | Sherman N. Weisgerber | S | Harold L. Lackey | T |
| | Earl C. Reynolds Jr. | D | | |
| 1963 | Robert W. Underkofler | P | Robert B. Christensen | PE |
| | Sherman N. Weisgerber | S | Don Lloyd | T |
| | Leif F. Erickson | D | | |
| 1964 | Robert B. Christensen | P | Archie L. Biladeau | PE |
| | W. Purdy Eaton | S | Don Lloyd | T |
| | Leif F. Erickson | D | | |
| 1965 | Archie L. Biladeau | P | Sherman N. Weisgerber | PE |
| | W. Purdy Eaton | S | Don Lloyd | T |

ISPE STATE OFFICERS (1910-19, 1937-2009)

| <u>YEAR</u> | <u>NAME</u> | <u>OFFICE</u> | <u>NAME</u> | <u>OFFICE</u> |
|-------------|------------------------|---------------|-------------------------|---------------|
| 1965 | James W. Martin | D | | |
| 1966 | Robert E. Smith | P | Earl E. Haroldsen | PE |
| | George F. Eidam | S | Norm Crossley | T |
| | James W. Martin | D | | |
| 1967 | Earl E. Haroldsen | P | Austin B. Milhollin | PE |
| | James Reid | S | George F. Eidam | t |
| | Sumner M. Johnson | D | | |
| 1968 | Austin B. Milhollin | P | George R. Russell | PE |
| | Ruel H Barrus | S | George F. Eidam | T |
| | Sumner M. Johnson | D | | |
| 1969 | George R. Russell | P | George F. Eidam | PE |
| | Ruel H Barrus | S | E. Dean Tisdale | T |
| | Robert E. Smith | D | | |
| 1970 | George F. Eidam | P | Thomas R. Spalding | PE |
| | Herbert R. Pember | S | E. Dean Tisdale | T |
| | Robert E. Smith | D | | |
| 1971 | Thomas R. Spalding | P | Keith Stokes | PE |
| | Herbert R. Pember | S | E. Dean Tisdale | T |
| | Robert E. Smith | D | | |
| 1972 | Keith Stokes | P | Dale L. Riedesel | PE |
| | Lyman D. Wilbur | S/T | George R. Russell | D |
| 1973 | Dale L. Riedesel | P | Wendell A. Higgins | PE |
| | Lyman D. Wilbur | S/T | George R. Russell | D |
| 1974 | Wendell Higgins | P | William A. Sylvies | PE |
| | Lyman Wilbur/Jim Pline | S/T | Earl E. Haroldsen | D |
| 1975 | William A. Sylvies | P | Richard O. Day | PE |
| | James L. Pline | S/T | Earl E. Haroldsen | D |
| 1976 | Richard Day-Les Walker | P | Les Walker/Wallace Cory | PE |
| | James L. Pline | S/T | Ellis Mathes | RD |
| 1977 | Wallace Cory | P | Charles Brockway | PE |
| | Roger R. Bissell | S/T | Ellis Mathes | D |
| | Dale L. Riedesel | JD | | |
| 1978 | Charles Brockway | P | James L. Pline | PE |
| | Roger R. Bissell | S/T | Dale L. Riedesel | D |
| | Wendell A. Higgins | JD | | |
| 1979 | James L. Pline | P | Robert R Furgason | PE |
| | William F. Johnson | S/T | Wendell A. Higgins | D |
| | Leroy R. Taylor | JD | | |
| 1980 | Robert Furgason | P | Norm Dahm | PE |
| | William F. Johnson | S/T | Leroy R. Taylor | D |
| | Robert W. Underkofler | JD | | |
| 1981 | Norm Dahm | P | Dewitt Tal Neill | PE |
| | Jerry Eggleston | S/T | Robert W. Underkofler | D |
| | Charles Brockway | JD | | |
| 1982 | Dewitt Tal Neill | P | Sherman A. Nelson | PE |
| | Jerry Eggleston | S/T | Charles Brockway | D |
| | James L. Pline | JD | | |

ISPE STATE OFFICERS (1910-19, 1937-2009)

| <u>YEAR</u> | <u>NAME</u> | <u>OFFICE</u> | <u>NAME</u> | <u>OFFICE</u> |
|-------------|---------------------|---------------|---------------------------|---------------|
| 1983 | Sherman A. Nelson | P | Scott F. McClure | PE |
| | Jerry Eggleston | S/T | James L. Pline | D |
| | Roger R. Bissell | JD | | |
| 1984 | Scott F. McClure | P | David K. Bennion | PE |
| | Gary D. Smith | S/T | Roger R. Bissell | D |
| 1985 | David K. Bennion | P | W.P. Barnes | PE |
| | Gary D. Smith | S/T | Roger R. Bissell | D |
| | William Sacht | JD | | |
| 1986 | W.P. Barnes | P | Fred K. Clements | PE |
| | John J. Harper | S/T | William Sacht | D |
| | J.P. O'Connor | JD | | |
| 1987 | Fred K. Clements | P | John J. Harper | PE |
| | Robert C. Farr | S/T | William Sacht | D |
| | Scott F. McClure | JD | | |
| 1988 | John J. Harper | P | William J. Ancell | PE |
| | Stanton S. Nuffer | S/T | Scott F. McClure | D |
| | Les M. Walker | JD | | |
| 1989 | William J. Ancell | P | Gary L. Young | PE |
| | Stanton S. Nuffer | S/T | Scott F. McClure | D |
| | Les M. Walker | JD | | |
| 1990 | Gary L. Young | P | W.A. Smith/Stanton Nuffer | PE |
| | John J. Brown | S/T | Les M. Walker | D |
| | Charles C. Bergman | JD | | |
| 1991 | William A. Smith | P | John J. Brown | PE |
| | John J. Brown | S/T | Les M. Walker | D |
| | Charles C. Bergman | JD | | |
| 1992 | William A. Smith | P | John J. Brown | PE |
| | Gil Walker | S/T | David K. Bennion | D |
| | Norm Dahm | JD | | |
| 1993 | John J. Brown | P | Steve L. Walker | PE |
| | Gil Walker | S/T | David K. Bennion | D |
| | Norm Dahm | JD | | |
| 1994 | Steve L. Walker | P | Joseph D. Canning | PE |
| | Sidney Brewer | S/T | Dewitt Tal Neill | D |
| 1995 | Joseph D. Canning | P | Charles Bergman | PE |
| | Kevin Nielsen | S/T | Norm Dahm | D |
| 1996 | Charles Bergman | P | Larry Fettkether | PE |
| | Gerald Fleischman | S/T | Dewitt Tal Neill | D |
| | Joseph D. Canning | JD | | |
| 1997 | Larry Fettkether | P | James DeShazer | PE |
| | Gerald Fleischman | S/T | Dewitt Tal Neill | D |
| | Joseph D. Canning | JD | | |
| 1998 | James DeShazer | P | J. Nestor Fernandez | PE |
| | Larry Fettkether | S/T | Joseph D. Canning | D |
| | Steve L. Walker | J/D | | |
| 1999 | J. Nestor Fernandez | P | John S. Bennion | PE |
| | Joseph Canning | S/T | Joseph D. Canning | D |

ISPE STATE OFFICERS (1910-19, 1937-2009)

| <u>YEAR</u> | <u>NAME</u> | <u>OFFICE</u> | <u>NAME</u> | <u>OFFICE</u> |
|-------------|---------------------|---------------|---------------------|---------------|
| 1999 | Steve L. Walker | JD | | |
| 2000 | John S. Bennion | P | Sharon E. Parkinson | PE |
| | Joseph D. Canning | S/T | Steve L. Walker | D |
| | Gary L. Young | JD | | |
| 2001 | Sharon E. Parkinson | P | Clifford I. Roberts | PE |
| | Joseph D. Canning | S/T | Gary L. Young | D |
| 2002 | Clifford I. Roberts | P | Karen M. Doherty | PE |
| | Joseph D. Canning | S/T | Gary L. Young | D |
| 2003 | Charles C. Bergman | JD | | |
| | Karen M. Doherty | P | David R. Schiess | PE |
| 2004 | Joseph D. Canning | S/T | Charles C. Bergman | D |
| | J. Nestor Fernandez | JD | | |
| | David R. Schiess | P | Stephen B. Loop | PE |
| 2005 | Joseph D. Canning | S/T | Charles C. Bergman | D |
| | J. Nestor Fernandez | JD | | |
| | Stephen B. Loop | P | Kenneth Hasfurth | PE |
| 2006 | Joseph D. Canning | S/T | J. Nestor Fernandez | D |
| | Gregory F. Brands | JD | | |
| | Kenneth Hasfurth | P | James S. Baker | PE |
| 2007 | Joseph D. Canning | S/T | J. Nestor Fernandez | D |
| | Gregory F. Brands | JD | | |
| | James S. Baker | P | Terry A. Harwood | PE |
| 2008 | Joseph D. Canning | S/T | Gregory F. Brands | D |
| | Stephen B. Loop | JD | | |
| | Terry A. Harwood | P | Lynn M. Olson | PE |
| 2009 | Joseph D. Canning | S/T | Gregory F. Brands | D |
| | Stephen B. Loop | JD | | |
| | Lynn M. Olson | P | A. Jay Hassell | PE |



FREE - LANCE draftswoman,

1966 – Mrs. Robert Griffiths – 1st Female Member of ISPE

ISPE FUNCTIONAL PRACTICE GROUP CHAIRS

PEPP – PROFESSIONAL ENGINEERS IN PRIVATE PRACTICE

(CONSULTING ENGINEERS OF IDAHO – CEI &

AMERICAN COUNCIL OF ENGINEERING COMPANIES OF IDAHO – ACEC OF IDAHO)

| | | | |
|------|--------------------------|------|-----------------------|
| 2010 | Vance Henry | 2009 | Karen Doherty |
| 2008 | Roger Sorenson | 2007 | Rex Hansen |
| 2006 | Jim Porter | 2005 | Mike Merhar |
| 2004 | Dick Jacobsen | 2003 | Hank Fenske |
| 2002 | Rob Tate | 2001 | Carlyle Briggs |
| 2000 | Sam Matthews | 1999 | Dave Butzier |
| 1998 | Gary Funkhouser | 1997 | Tom Krumsick |
| 1996 | George Wagner | 1995 | Scott McClure |
| 1994 | Charles Williams | 1993 | Don Hubble |
| 1992 | Steve Narkiewicz | 1991 | Jack Harper |
| 1990 | Jerry Peterson/S. Pitkin | 1989 | Jim Rees |
| 1988 | Les Walker | 1987 | Bill Johnson |
| 1986 | Rick Orton | 1985 | Phil Smith |
| 1984 | Jim Keller | 1983 | Larry Osgood |
| 1982 | Walt Jones | 1981 | Walter V. Jones |
| 1980 | Gilbert C. Walker | 1979 | Donald M. Ellsworth |
| 1978 | Theodore H. Purcell | 1977 | D. Michael Preston |
| 1976 | Stanton S. Nuffer | 1975 | Larry V. Perkins |
| 1974 | Richard T. Kanemasu | 1973 | LeRoy R. Taylor |
| 1972 | Donald D. Wisdom | 1971 | Wendell A. Higgins |
| 1970 | John L. Hoffman | 1969 | John L. Hoffman |
| 1968 | C. James Voeller | 1967 | William W. Briggs |
| 1966 | Bruce W. Stoddard | 1965 | Donald D. Wisdom |
| 1964 | Don C. McCarter | 1963 | Austin B. Milhollin |
| 1962 | Keith E. Anderson | 1961 | Terrence O'Rouark |
| 1960 | Bill M. Chronic | 1959 | Charles C. Fisk |
| 1958 | Davis C. Toothman | 1957 | Robert W. Underkofler |
| 1956 | Robert E. Smith | | |

PEE – PROFESSIONAL ENGINEERS IN EDUCATION

| | | | |
|----------|-------------------|---------|-------------------|
| 2001-07 | John Bennion | 2000 | James De Shazer |
| 1991-99 | James H. Milligan | 1987-90 | George R. Russell |
| 1982 -85 | W. P. Barnes | 1980 | G. L. Bloomsburg |
| 1979 | Norm Dahm | 1977-78 | Dewitt Tal Neill |
| 1976 | Cecil Hathaway | 1971 | George R. Russell |
| 1968-70 | Paul Mann | 1966-67 | James W. Martin |

ISPE FUNCTIONAL PRACTICE GROUP CHAIRS

PEG – PROFESSIONAL ENGINEERS IN GOVERNMENT

| | | | |
|-----------|----------------------------|---------|-------------------|
| 1999-2005 | Gerald Fleishman | 1991-98 | Jay L. Cornelison |
| 1990 | Robert B. Butler | 1989 | G. R. Burkett |
| 1988 | Eric Stewart | 1986-87 | Stephen B. Loop |
| 1985 | Gary L. Young | 1984 | J. L. Yoder |
| 1983 | E. A. Burbidge | 1982 | H.L. Zollinger |
| 1980 | W.L. Robinson | 1979 | W.L. Meyer |
| 1978 | Verl King | 1977 | Dan McComb |
| 1976 | Wayne Pickerill | 1975 | Donald P. Stewart |
| 1974 | Herbert Pember | 1973 | James Bondurant |
| 1972 | Walt Jones & Jim Bondurant | 1971 | Tom Curtis |
| 1970 | John Cosho | 1969 | Robert Atwood |
| 1968 | Homer Moore | 1966-67 | Norman Crossley |
| 1964 | James Morris | 1963 | Elmer Soniville |
| 1962 | Ted Bell | 1959 | Melvin Lewis |
| 1958 | Roy Harden | | |

PEI – PROFESSIONAL ENGINEERS IN INDUSTRY

| | | | |
|---------|------------------------------|-----------|--------------------|
| 2001-03 | Mike Morrison | 1996-2000 | Steve Walker |
| 1992 | Ralph Fearnow | 1988-91 | Thomas W. Prange |
| 1982-87 | Ralph Fearnow | 1980 | J. L. Johnstone |
| 1978-79 | Sherman A. Nelson | 1974-77 | John Commander |
| 1973 | John Esklin & John Commander | | |
| 1970-72 | John Esklin | 1969 | Walt Walstra |
| 1968 | Albert McGuire | 1967 | Ruel Barrus |
| 1966 | Richard Decker | 1964-5 | Thomas R. Spalding |
| 1963 | J.P. O'Connor | 1960-62 | George Millar |



1969 ISPE Annual Meeting



2003 George Russell
Hall of Fame Induction

MAGIC VALLEY CHAPTER OFFICERS 1952-2009

Key: P – President
 S - Secretary
 S/T – Secretary/ Treasurer

PE – President Elect
 T -Treasurer
 D - Director

| YEAR | NAME | OFFICE | YEAR | NAME | OFFICE |
|-------------|--------------------|---------------|-------------|-----------------------------|---------------|
| 1952 | Vincent T. Young | P | 1953 | John A. Phelps/Joe Latimore | P |
| 1954 | Carroll F. Wilcomb | P | 1955 | Norman Crossley | P |
| 1956 | James A. Cairns | P | 1957 | W.A. Walstra | P |
| 1958 | Harold L. Lackey | P | | | |

| YEAR | NAME | OFFICE | NAME | OFFICE |
|-------------|---------------------|---------------|---------------------|---------------|
| 1959 | Earl E. Haroldsen | P | Thomas H. Curtis | S/T |
| 1960 | Charles W. Glasby | P | Joe Huckabee | PE |
| | Thomas H. Curtis | S/T | Carroll F. Wilcomb | D |
| 1961 | Joe Huckabee | P | William W. Pardew | PE |
| | E. A. Gene Burbidge | S/T | Charles W. Glasby | D |
| 1962 | William W. Pardew | P | Clinton A. Sept | PE |
| | R.C. Mitchell | S/T | Charles W. Glasby | D |
| 1963 | Clinton A. Sept | P | James Clayton | PE |
| | Fred A. Powers | S/T | Charles W. Glasby | D |
| 1964 | James Clayton | P | Paul E. Newton | PE |
| | Fred A. Powers | S/T | Charles W. Glasby | D |
| 1965 | Paul E. Newton | P | Robert B. Atwood | PE |
| | Fred A. Powers | S/T | Earl E. Haroldsen | D |
| 1966 | Robert B. Atwood/ | P | A.R. Robinson/ | PE |
| | A.R. Robinson | P | J.P. O'Connor | PE |
| | Fred A. Powers | S/T | Paul E. Newton | D |
| 1967 | J. P. O'Connor | P | Don H. Morse | PE |
| | Fred Powers | S/T | Paul Newton | S |
| 1968 | Don H. Morse | P | James L. Pline | PE |
| | Fred A. Powers | S/T | Pat O'Connor | D |
| 1969 | James L. Pline / | P | Dale L. Riedesel / | PE |
| | Dale L. Riedesel | P | H. Lee Greer | PE |
| | Fred A. Powers | S/T | Don H. Morse | D |
| 1970 | H. Lee Greer | P | Charles E. Brockway | PE |
| | Bill E. Berry | S/T | Dale L. Riedesel | D |
| 1971 | Charles E. Brockway | P | James L. Johnstone | PE |
| | G.R. Michael | S/T | Dale L. Riedesel | D |
| 1972 | James L. Johnstone | P | Ron Dehlin | PE |
| | Martin Foss | S/T | Bill Berry | D |
| 1973 | Ron Dehlin/ | P | John J. Straubhar | PE |
| | Jack Straubhar | P | Martin L. Foss | S/T |
| | Charles Brockway | D | | |
| 1974 | John J. Straubhar | P | Thomas E. Pestotnik | PE |
| | Martin L. Foss | S/T | Charles Brockway | D |
| 1975 | Thomas E. Pestotnik | P | Jean Milar | PE |
| | Martin L. Foss | S/T | James L. Johnstone | D |

MAGIC VALLEY CHAPTER OFFICERS 1952-2009

| <u>YEAR</u> | <u>NAME</u> | <u>OFFICE</u> | <u>NAME</u> | <u>OFFICE</u> |
|-------------|--------------------|---------------|-----------------------------|---------------|
| 1976 | Jean Milar | P | James Bondurant | PE |
| | James Simpson | S/T | James Johnstone | D |
| 1977 | James Bondurant | P | Delbert Block | PE |
| | James Simpson | S/T | John J. Straubhar | D |
| 1978 | Delbert Bill Block | P | Eugene D. Moon | PE |
| | Bruce Butler | S/T | Paul E. Newton | D |
| 1979 | Eugene D. Moon | P | Gary L Young | PE |
| | Robert B. Butler | S/T | Delbert Bill Block | D |
| 1980 | Gary L. Young | P | Gerald L. Martens | PE |
| | Mark H. Bowen | S/T | Delbert Bill Block | D |
| 1981 | Gerald L. Martens | P | Scott McClure | PE |
| | Mark H. Bowen | S/T | Delbert Bill Block | D |
| 1982 | Scott McClure | P | R. J. Coleman | PE |
| | Gary R. Burkett | S/T | Eugene D. Moon | D |
| 1983 | R. J. Coleman | P | Gary R. Burkett | PE |
| | Scott L. Bybee | S/T | Gerald L. Martens | D |
| 1984 | Gary R. Burkett | P | Scott L. Bybee | PE |
| | R. J. Parkinson | S/T | Gerald L. Martens | D |
| 1985 | Scott L. Bybee | P | R. J. Parkinson | PE |
| | Michael Mann | S/T | Gary R. Burkett | D |
| 1986 | R. J. Parkinson | P | Mike Mann/D.J. Monson | PE |
| | Mark H. Bowen | S/T | Scott L. Bybee | D |
| 1987 | Dile J. Monson | P | Mark H. Bowen | P |
| | James Simpson | S/T | Scott L. Bybee | D |
| 1988 | Mark H. Bowen | P | Charles Bergman | PE |
| | James Simpson | S/T | R.J. Parkinson/D. J. Monson | D |
| 1989 | Charles Bergman | P | J R Cox/Steve Walker | PE |
| | James Simpson | S/T | Dile J. Monson | D |
| 1990 | Steve Walker | P | Gary Burkett | PE |
| | James Simpson | S/T | Sid Brewer | D |
| 1991 | Gary R. Burkett | P | Loren D. Thomas | PE |
| | James Simpson | S/T | Charles Bergman | D |
| 1992 | Loren D. Thomas | P | William Woods | PE |
| | Scott Sterling | S/T | Charles Bergman | D |
| 1993 | William Woods | P | Scott Sterling | S/T |
| | Charles Bergman | D | | |
| 1994 | John Cox | P | Shawn Crea | PE |
| | Scott Sterling | S/T | William Woods | D |
| 1995 | Shawn Crea | P | Richard Scheitzer | PE |
| | Scott Sterling | S/T | John Cox | D |
| 1996 | John Meyer | P | Larry Hinton | PE |
| | Scott Sterling | S/T | Shawn Crea | D |
| 1997 | Larry Hinton | P | Gary Burkett | PE |
| | Scott Sterling | S/T | John Meyer | D |
| 1998 | Gary Burkett | P | Mike Trabert | PE |
| | Scott Sterling | S/T | Larry Hinton | D |
| 1999 | Ken Hasfurther | P | Martin Gergen | PE |

MAGIC VALLEY CHAPTER OFFICERS 1952-2009

| <u>YEAR</u> | <u>NAME</u> | <u>OFFICE</u> | <u>NAME</u> | <u>OFFICE</u> |
|-------------|------------------|---------------|--------------------|---------------|
| 1999 | Scott Sterling | S/T | Gary Burkett | D |
| 2000 | Martin Gergen | P | | |
| | Scott Sterling | S/T | Gary Burkett | D |
| 2001 | Perry Van Patten | P | Mike Trabert | PE |
| | Scott Sterling | S/T | Martin Gergen | D |
| 2002 | Mike Trabert | P | | |
| | Richard Hawkes | S/T | Martin Gergen | D |
| 2003 | Andrew Swensen | P | Aaron Wert | PE |
| | Lance Bates | S/T | Martin Gergen | D |
| 2004 | Aaron Wert | P | Lance Bates | S/T |
| 2005 | Lance Bates | P | | |
| 2006 | Don Acheson | P | | |
| | Chevy Baily | S/T | Kenneth Hasfurther | D |
| 2007 | Chevy Baily | P | | |
| | Joshua Baird | S/T | Kenneth Hasfurther | D |
| 2008 | Chevy Baily | P | Alan Hansten | PE |
| | Joshua Baird | S/T | Kenneth Hasfurther | D |
| 2009 | Chevy Baily | P | | |
| | Joshua Baird | S/T | Kenneth Hasfurther | D |



**Only ISPE Father & Son State Presidents
Gerald Riedesel (1954) & Dale Riedesel (1973)**

NORTHERN CHAPTER OFFICERS 1959 - 2009

Key: P – President PE – President Elect
 VP#1 – Vice President #1 VP#2 – Vice President #2
 S/T – Secretary/ Treasurer D – Director

| <u>YEAR</u> | <u>NAME</u> | <u>OFFICE</u> | <u>NAME</u> | <u>OFFICE</u> |
|--------------------------|--------------------------|---------------|--------------------|---------------|
| 1938-1958 Mostly Unknown | | | | |
| 1948 | Allen S. Janssen | P | | |
| 1955-56 | James W. Martin | P | | |
| 1959 | Philip A. Marsh | P | Elmer E. Soniville | S/T |
| 1960 | Frank Junk | P | | |
| | Don Brownson | VP#1 | Arthur Van't Hull | VP#2 |
| | James E. Parker | S/T | Elmer Soniville | D |
| 1961 | J.F. Pearring | P | | |
| | Arthur Van't Hull | VP#1 | James E. Parker | VP#2 |
| | John Pointner | S/T | Elmer Soniville | D |
| 1962 | Arthur Van't Hull | P | | |
| | James A. Parker | VP#1 | C. A. McDonald | VP#2 |
| | William G. Edward | S/T | Frank Junk | D |
| 1963 | James E. Parker | P | | |
| | C. A. McDonald | VP#1 | William G. Edward | VP#2 |
| | Keith Stokes | S/T | Frank Junk | D |
| 1964 | C. A. McDonald | P | | |
| | William G. Edward | VP#1 | Eric Watson | VP#2 |
| | L. J. Crow | S/T | George R. Russell | D |
| 1965 | Keith Stokes/R. H. Tutty | P | | |
| | R. H. Tutty | VP#1 | L. J. Crow | VP#2 |
| | Paul Mann | S/T | George R. Russell | D |
| 1966 | L. J. Crow | P | | |
| | Gil L. Cory | VP#1 | Clayton Sullivan | VP#2 |
| | Merle Harding | S/T | Paul Mann | D |
| 1967 | Gil L. Cory | P | | |
| | Clayton Sullivan | VP#1 | Merle Harding | VP#2 |
| | Larry Williams | S/T | Paul Mann | D |
| 1968 | Clayton Sullivan | P | | |
| | Merle Harding | VP#1 | Robert Furgason | VP#2 |
| | Leroy W. Meyer | S/T | Gil L. Cory | D |
| 1969 | Merle Harding | P | | |
| | Robert Furgason | VP#1 | Leroy W. Meyer | VP#2 |
| | Bob Dunsmore | S/T | Gil L. Cory | D |
| 1970 | Robert Furgason | P | Marvin Lotspeich | PE |
| | William A. Sylvies | S/T | Merle Harding | D |
| 1971 | Marvin Lotspeich | P | | |
| | J. O. LePard | VP#1 | William A. Sylvies | VP#2 |
| | Douglas J. McAtee | S/T | Merle Harding | D |
| 1972 | William A. Sylvies | P | | |
| | Douglas J. McAtee | VP#1 | Donald Ferguson | VP#2 |
| | W.L. Robinson | S/T | Marvin Lotspeich | D |
| 1973 | Douglas McAtee | P | | |

NORTHERN CHAPTER OFFICERS 1959 - 2009

| <u>YEAR</u> | <u>NAME</u> | <u>OFFICE</u> | <u>NAME</u> | <u>OFFICE</u> |
|-------------|-------------------|---------------|------------------------|---------------|
| 1973 | Donald Ferguson | VP#1 | Wayne Robinson | VP#2 |
| | D. Richard Wyatt | S/T | Marvin Lotspeich | D |
| 1974 | Donald Ferguson | P | Richard Warner | D |
| | Wayne Robinson | VP#1 | D. Richard Wyatt | VP#2 |
| 1975 | Robert Ewing | S/T | Richard Warner | D |
| | D. Richard Wyatt | P | Richard Warner | D |
| 1976 | Yung-Shing Hsu | S/T | | |
| | D. Richard Wyatt | P | | |
| 1977 | Neil Fitz Simmons | VP#1 | Robert Ewing | VP#2 |
| | Yung-Shing Hsu | S/T | Richard Warner | D |
| 1978 | Neil Fitz Simmons | P | | |
| | Robert Ewing | VP#1 | Yung-Shing Hsu | VP#2 |
| 1979 | Richard Warner | S/T | D. Richard Wyatt | D |
| | Robert Ewing | P | Yung-Shing Hsu | PE |
| 1980 | Joseph K Haynes | S/T | Richard Wyatt | D |
| | Yung-Shing Hsu | P | | |
| 1981 | Richard Warner | VP#1 | Joseph K Haynes | VP#2 |
| | S. R. Alters | S/T | Robert Ewing | D |
| 1982 | Richard Warner | P | | |
| | Joseph K Haynes | VP#1 | S. R. Alters | VP#2 |
| 1983 | T. S. Sorenson | S/T | Yung-Shing Hsu | D |
| | Joseph K Haynes | P | Dale R. Baune | PE |
| 1984 | Thomas G. Wells | S/T | Yung-Shing Hsu | D |
| | Dale R. Baune | P | Thomas G. Wells | PE |
| 1985 | Darius L. Ruen | S/T | Joseph K Haynes | D |
| | Thomas G. Wells | P | | |
| 1986 | R. J. Hoyle | VP#1 | W. P. Barnes | VP#2 |
| | Darius L. Ruen | S/T | Dale R. Baune | D |
| 1987 | R. J. Hoyle | P | | |
| | W. P. Barnes | VP#1 | Darius L. Ruen | VP#2 |
| 1988 | G. C. Wells | S/T | Thomas G. Wells | D |
| | Darius L. Ruen | P | | |
| 1989 | G. C. Wells | VP#1 | Dale R. Baune | VP#2 |
| | J. Law | S/T | R. G. Hoyle | D |
| 1990 | G. C. Wells | P | Dale R. Baune/J.L. Law | PE |
| | W. A. Smith | S/T | Darius L. Ruen | D |
| 1991 | J. Law | P | W. A. Smith | PE |
| | C. P. Liou | S/T | G. C. Wells | D |
| 1992 | W. A. Smith | P | C. P. Liou | PE |
| | Larry Hodge | S/T | J. Law | D |
| 1993 | C. P. Liou | P | Larry J. Hodge | PE |
| | Jim S. DeSmet | S/T | P. M. Kruse | D |
| 1994 | Larry J. Hodge | P | Jim S. DeSmet | PE |
| | Larry Comer | S/T | William A. Smith | D |
| 1995 | Jim S. DeSmet | P | Dave Schreiber | PE |
| | Larry Comer | S/T | Larry J. Hodge | D |
| 1996 | Dave Schreiber | P | James De Shazer | PE |

NORTHERN CHAPTER OFFICERS 1959 - 2009

| <u>YEAR</u> | <u>NAME</u> | <u>OFFICE</u> | <u>NAME</u> | <u>OFFICE</u> |
|-------------|------------------------|---------------|-----------------|---------------|
| 1992 | Larry Comer | S/T | Dave Schreiber | D |
| 1993 | James De Shazer | P | Larry Comer | PE |
| | Chris Beck | S/T | Dave Schreiber | D |
| 1994 | Larry Comer | P | Ed Schmeckpeper | PE |
| | Chris Beck | S/T | Jim DeShazer | D |
| 1995 | Ed Schmeckpeper | P | Chris Beck | PE |
| | Larry Comer | S/T | Jim DeShazer | D |
| 1996 | Robert Tate | P | Chris Beck | PE |
| | Larry Comer | S/T | Jim DeShazer | D |
| 1997 | Robert Tate | P | Chris Beck | PE |
| | Larry Comer | S/T | Jim DeShazer | D |
| 1998 | John Finnie | P | | |
| | Larry Comer | S/T | Robert Tate | D |
| 1999 | Chris Beck | P | Travis Wambeke | PE |
| | Larry Comer | S/T | John Finnie | D |
| 2000 | Travis Wambeke | P | | |
| | Larry Comer | S/T | John Finnie | D |
| 2001 | Travis Wambeke | P | Larry Comer | S/T |
| 2002 | Travis Wambeke | P | Larry Comer | S/T |
| 2003 | Greg Brands | P | Robert Palus | PE |
| | Rob Spafford | S/T | Larry Comer | D |
| 2004 | Robert Palus | P | Greg Brands | PE |
| | Rob Spafford | S/T | Larry Comer | D |
| 2005 | Greg Brands | P | A. Jay Hassell | PE |
| | Andrew Staples | S/T | Larry Comer | D |
| 2006 | A. Jay Hassel | P | Chris Boyd | PE |
| | Andrew Staples | S/T | Larry Comer | D |
| 2007 | Chris Boyd | P | | |
| | Andrew Staples | S/T | Larry Comer | D |
| 2008 | Chris Boyd | P | | |
| | Mike Paul | S/T | Larry Comer | D |
| 2009 | Tom Berglin/Eric Olson | P | | |
| | Mike Paul | S/T | Larry Comer | D |

2010 MATHCOUNTS (Northern Chapter & State Winners)



SOUTHEAST CHAPTER OFFICERS 1959-2009

Key: P – President PE – President Elect
 S/T – Secretary/ Treasurer D – Director

| YEAR | NAME | OFFICE | NAME | OFFICE |
|--------------------------|-----------------------|--------|----------------------------|--------|
| 1938-1958 Mostly Unknown | | | | |
| 1948 | Woodrow Arrington | P | | |
| 1955 | Robert F. Hamilton | P | | |
| 1959 | Robert B. Christensen | P | James N. Welch | S/T |
| 1960 | LeGrande P. Marchant | P | James Howard | PE |
| | Don Lloyd | S/T | Archie Biladeau | D |
| 1961 | Max N. Jensen | P | Donald F. Lloyd | PE |
| | Ruel Barrus | S/T | Archie Biladeau | D |
| 1962 | Donald F. Lloyd | P | Ruel Barrus | PE |
| | Ken H. McLean | S/T | Robert F. Hamilton | D |
| 1963 | Ruel Barrus | P | Ken McLean | PE |
| | L. H. Hegman | S/T | Robert F. Hamilton | D |
| 1964 | Robert E. Eardley | P | L. H. Hegman | PE |
| | Fred Clements | S/T | Ruel Barrus | D |
| 1965 | L. H. Hegman | P | E. A. Burbidge | PE |
| | Keith A. Bithell | S/T | P. A. Marsh | D |
| 1966 | E. A. Burbidge | P | Keith A. Bithell | PE |
| | Wayne D. Cheney | S/T | E. A. Burbidge /P.A. Marsh | D |
| 1967 | Keith Bithell | P | Tom R. Spaulding | PE |
| | D.P. Steward | S/T | LeGrande P. Marchant | D |
| 1968 | Tom R. Spaulding | P | Les M. Walker | PE |
| | George A. Mortensen | S/T | LeGrande P. Marchant | D |
| 1969 | Les M. Walker | P | | |
| | John C. Pearson | S/T | Gene Claussen | D |
| 1970 | Ira L. Stanley | P | Dewitt Tal Neill | PE |
| | W. B Rood | S/T | H. L. Day Jr. | D |
| 1971 | Dewitt Tal Neill | P | Joseph Laird | PE |
| | David N. Kempe | S/T | K. A. Bithell | D |
| 1972 | Joseph Laird | P | David N. Kempe | PE |
| | Martin B. Trillhaase | S/T | Keith A. Bithell | D |
| 1973 | David Kempe/Tom Baker | P | Thomas Baker | PE |
| | Stanley S. Hintze | S/T | Dewitt Tal Neill | D |
| 1974 | Stanley S. Hintze | P | W. F. Rance Bare | PE |
| | Frank R. Leibrock | S/T | Dewitt Tal Neill | D |
| 1975 | W. F. Rance Bare | P | Frank R. Leibrock | PE |
| | Lyle Thompson | S/T | Les M. Walker | D |
| 1976 | Frank Leibrock | P | Lyle Thompson | PE |
| | Malati Charyulu | S/T | Ralph E. Fearnow | D |
| 1977 | Lyle Thompson | P | Malati Charyulu | PE |
| | Ed Turner | S/T | Ralph E. Fearnow | D |
| 1978 | Malati Charyulu | P | George A. Freund | PE |
| | Brent Bailey | S/T | Ralph E. Fearnow | D |
| 1979 | George A. Freund | P | Brent Bailey | PE |
| | G.L. Biladeau | S/T | W. F. Rance Bare | D |

SOUTHEAST CHAPTER OFFICERS 1959-2009

| <u>YEAR</u> | <u>NAME</u> | <u>OFFICE</u> | <u>NAME</u> | <u>OFFICE</u> |
|-------------|------------------------------|---------------|-------------------|---------------|
| 1980 | Brent Bailey | P | | |
| | J. L. Cornelison | S/T | W. F. Rance Bare | D |
| 1981 | Bruce Bradley | P | J. L. Cornelison | PE |
| | G.R. Marshall | S/T | W. F. Rance Bare | D |
| 1982 | J. L. Cornelison | P | G. R. Marshall | PE |
| | D. J. Burrie | S/T | B. N. Bradley | D |
| 1983 | G. R. Marshall | P | D. J. Burrie | PE |
| | W. R. Young | S/T | J. L. Cornelison | D |
| 1984 | W. R. Young | P | W. Roderick | PE |
| | E. Stewart | S/T | G. R. Marshall | D |
| 1985 | John J. Harper | P | D.A. Crea | PE |
| | C. V. Park | S/T | W.R. Young | D |
| 1986 | D.A. Crea | P | E. Stewart | PE |
| | Ron Luedeman | S/T | John J. Harper | D |
| 1987 | E. Stewart | P | Ron Luedeman | PE |
| | Kevin M. Whittier | S/T | D.A. Crea | D |
| 1988 | Ron Luedeman | P | Daryle Mecham | PE |
| | Kevin M. Whittier | S/T | | D |
| 1989 | Daryle Mecham | P | Kevin M. Whittier | PE |
| | W.F. Bare | S/T | E. Stewart | D |
| 1990 | W. Leroy Meyer/Robert Butler | P | Robert Butler | PE |
| | Gary A. Dunn | S/T | Daryle Mecham | D |
| 1991 | Robert Butler | P | Steve Walker | PE |
| | Gary A. Dunn | S/T | Daryle Mecham | D |
| 1992 | Steve Walker | P | Kevin Whittier | PE |
| | Jay Cornelison | S/T | Robert Butler | D |
| 1993 | Kevin Whittier | P | Jay Cornelison | PE |
| | E (Bud) McArthur | S/T | Robert Butler | D |
| 1994 | Jay Cornelison | P | E (Bud) McArthur | PE |
| | Rob Detzner | S/T | Kevin Whittier | D |
| 1995 | E (Bud) McArthur | P | Rob Detzner | PE |
| | John Bennion | S/T | Jay Cornelison | D |
| 1996 | David Schiess | P | John Bennion | PE |
| | Chris Lindemann | S/T | E (Bud) McArthur | D |
| 1997 | John Bennion | P | Chris Lindemann | PE |
| | Kent Magleby | S/T | David Schiess | D |
| 1998 | Greg Cotten | P | Kent Magleby | PE |
| | J. Mitchell Greer | S/T | John Bennion | D |
| 1999 | Kent Magleby | P | J. Mitchell Greer | PE |
| | Jacob Dustin | S/T | Greg Cotten | D |
| 2000 | J Mitchell Greer | P | Jacob Dustin | PE |
| | Shaun Dustin | S/T | Kent Magleby | D |
| 2001 | Jacob Dustin | P | Shaun Dustin | PE |
| | Bradley King | S/T | John Bennion | D |
| 2002 | Bradley King | P | | |
| | John Kirkpatrick | S/T | Jacob Dustin | D |

SOUTHEAST CHAPTER OFFICERS 1959-2009

| <u>YEAR</u> | <u>NAME</u> | <u>OFFICE</u> | <u>NAME</u> | <u>OFFICE</u> |
|-------------|-------------------|---------------|-------------------|---------------|
| 2003 | Bradley King | P | John Kirkpatrick | PE |
| | Brian Williams | S/T | John Bennion | D |
| 2004 | John Kirkpatrick | P | Brian Williams | PE |
| | Michael Jaglowski | S/T | John Bennion | D |
| 2005 | Brian Williams | P | Michael Jaglowski | PE |
| | Chris Park | S/T | John Bennion | D |
| 2006 | Michael Jaglowski | P | Chris Park | S/T |
| | John Bennion | D | | |
| 2007 | Chris Park | S/T | John Bennion | D |
| 2009 | Steve Walker | P | Richard Feurborn | PE |
| | Ron Leudman | S/T | | |

NATIONAL REACTOR TESTING STATION CHAPTER

| <u>YEAR</u> | <u>NAME</u> | <u>OFFICE</u> | <u>NAME</u> | <u>OFFICE</u> |
|-------------|----------------------------|---------------|--------------------|---------------|
| 1972 | Richard P. M. Gildersleeve | P | Jay F. Kunze | PE |
| | T.B. McLaughlin | S/T | Boris A. Bernstein | D |
| 1973 | Jay F. Kunze | P | Vincent G. Aquino | PE |
| | Tom B. McLaughlin | S/T | Boris A. Bernstein | D |
| 1974-75 | Ralph Fearnow | P | | |
| | Ben C. Lunis | S/T | Al McGuire | D |

Experimental Breeder Reactor Number 1



SOUTHWEST CHAPTER OFFICERS 1956-2009

Key: P – President PE – President Elect
 S/T – Secretary/ Treasurer D – Director

| YEAR | NAME | OFFICE | NAME | OFFICE |
|--------------------------|------------------------------|---------------|-----------------------------|---------------|
| 1938-1955 Mostly Unknown | | | | |
| 1947 | Linne F. Erickson | P | Clyde P. Humpries | PE |
| | Earl E. Haroldsen | S/T | | |
| 1948 | Linne F. Erickson | D | | |
| 1956 | Sumner M. Johnson | P | Sherman Weisgerber | S/T |
| | Aleck Alexander | D | | |
| 1957 | Austin B. Milhollin | P | Robert W. Underkofler | S/T |
| | Sumner M. Johnson | D | | |
| 1958 | Leif F. Erickson | P | Robert Underkofler | PE |
| | Marcey Laragan | S/T | | |
| 1959 | Robert Underkofler | P | Alan Huggins | S/T |
| 1960 | Harry L. Day | P | Norman Dahm | PE |
| | Joe McCullough | S/T | Don Applegate | D |
| 1961 | John Mors | P | Harold Hatterson | PE |
| | LeRoy Taylor | S/T | Bill Harris | D |
| 1962 | Harlan G. Formo | P | LeRoy Taylor | PE |
| | Louie J. Schmitt | S/T | Bill Harris | D |
| 1963 | Louie J. Schmitt | P | Robert Smith | PE |
| | John D. Priestler | S/T | John Mors | D |
| 1964 | Robert Smith | P | John Priestler | PE |
| | E. Dean Tisdale | S/T | John Mors/John Eskelin | D |
| 1965 | John Eskelin | P | Dean Tisdale | PE |
| | Rick H. Bendio /R.L. Marker | S/T | Bob Smith | D |
| 1966 | Dean Tisdale | P | Wendell Higgins | PE |
| | Richard L. Marker | S/T | Austin Milhollin | D |
| 1967 | Wendell Higgins | P | Keith Stokes | PE |
| | Jerry Eggleston | S/T | Dean Tisdale | D |
| 1968 | Keith Stokes | P | Jerry Eggleston | PE |
| | Marvin Lotspeich | S/T | Dean Tisdale | D |
| 1969 | Jerry Eggleston | P | W.W. Sacht | PE |
| | Ken McLean | S/T | Wendell Higgins | D |
| 1970 | W.W. Sacht | P | Ken McLean | PE |
| | Richard Day | S/T | Wendell Higgins | D |
| 1971 | Ken McLean | P | Richard Day | PE |
| | James Pline | S/T | Bill Sacht | D |
| 1972 | Richard Day | P | Wallace Cory | PE |
| | Dave McConnon | S/T | Bill Sacht | D |
| 1973 | Wallace Cory | P | Dave McConnon/Fred Clements | PE |
| | Fred Clements/Michael Anglea | S/T | Richard Day | D |
| 1974 | Fred Clements | P | Michael Anglea | PE |
| | Norman Dahm | S/T | Richard Day | D |
| 1975 | Michael Anglea | P | Norman Dahm | PE |
| | Jerry Peterson | S/T | Fred Clements | D |
| 1976 | Norman Dahm | P | Jerry Peterson | PE |

SOUTHWEST CHAPTER OFFICERS 1956-2009

| <u>YEAR</u> | <u>NAME</u> | <u>OFFICE</u> | <u>NAME</u> | <u>OFFICE</u> |
|-------------|--------------------------|---------------|---------------------|---------------|
| 1976 | Monte Fiala | S/T | Fred Clements | D |
| 1977 | Jerry Peterson | P | Monte Fiala | PE |
| | Sherman Nelson | S/T | Jerry Eggleston | D |
| 1978 | Monte Fiala/Sherm Nelson | P | Sherman Nelson | PE |
| | David Bennion | S/T | Jerry Eggleston | D |
| 1979 | Sherman Nelson | P | David Bennion | PE |
| | Gary D. Smith | S/T | Jerry Eggleston | D |
| 1980 | David Bennion | P | Gary D. Smith | PE |
| | Denny B. Twitchell | S/T | Sherman Nelson | D |
| 1981 | Gary D. Smith | P | Denny B. Twitchell | PE |
| | Robert P. Walker | S/T | Sherman Nelson | D |
| 1982 | Denny B. Twitchell | P | Robert P. Walker | PE |
| | Sherrill M. Pitkin | S/T | G. D. Smith | D |
| 1983 | Robert P. Walker | P | S. M. Pitkin | PE |
| | William J. Ancell | S/T | Denny B. Twitchell | D |
| 1984 | Sherrill M. Pitkin | P | William J. Ancell | PE |
| | R. W. Pocta | S/T | Robert P. Walker | D |
| 1985 | William J. Ancell | P | R. W. Pocta | PE |
| | E. Don Hubble | S/T | Sherrill M. Pitkin | D |
| 1986 | R. W. Pocta | P | E. Don Hubble | PE |
| | James W. Linford | S/T | William J. Ancell | D |
| 1987 | E. Don Hubble | P | M. J. Jensions | PE |
| | John J. Brown | S/T | J. P. O'Connor | D |
| 1988 | John J. Brown | P | | |
| | Jerry D. Nielson | S/T | Jerry A. Peterson | D |
| 1989 | James W. Linford | P | Jerry D. Nielson | PE |
| | Larry M. Fettkether | S/T | Jerry A. Peterson | D |
| 1990 | Jerry D. Nielson | P | Larry M. Fettkether | PE |
| | Joseph D. Canning | S/T | James W. Linford | D |
| 1991 | Larry M. Fettkether | P | Joseph D. Canning | PE |
| | Kevin D. Nielsen | S/T | James W. Linford | D |
| 1992 | Joseph D. Canning | P | Kevin Nielsen | PE |
| | Colleen Ramsey | S/T | Larry M. Fettkether | D |
| 1993 | Kevin Nielsen | P | Colleen Ramsey | PE |
| | Gerald Fleishman | S/T | Larry M. Fettkether | D |
| 1994 | Colleen Ramsey | P | Gerald Fleischman | PE |
| | Nestor Fernandez | S/T | Larry Fettkether | D |
| 1995 | Gerald Fleischman | P | Nestor Fernandez | PE |
| | Sharon Parkinson | S/T | Larry Fettkether | D |
| 1996 | Nestor Fernandez | P | Sharon Parkinson | PE |
| | Stephen Affleck | S/T | Gerald Fleischman | D |
| 1997 | Sharon Parkinson | P | Stephen Affleck | PE |
| | Clifford Roberts | S/T | Gerald Fleischman | D |
| 1998 | Stephen Affleck | P | Clifford Roberts | PE |
| | Kelvin Anderson | S/T | Gerald Fleischman | D |
| 1999 | Clifford Roberts | P | Kelvin Anderson | PE |
| | Stephen Loop | S/T | Stephen Affleck | D |

SOUTHWEST CHAPTER OFFICERS 1956-2009

| <u>YEAR</u> | <u>NAME</u> | <u>OFFICE</u> | <u>NAME</u> | <u>OFFICE</u> |
|-------------|------------------|---------------|-----------------|---------------|
| 2000 | Kelvin Anderson | P | Stephen Loop | PE |
| | Michael Morrison | S/T | Stephen Affleck | D |
| 2001 | Stephen Loop | P | Mike Morrison | PE |
| | James Baker | S/T | Kelvin Anderson | D |
| 2002 | Mike Morrison | P | James Baker | PE |
| | Kenneth Nichols | S/T | Kelvin Anderson | D |
| 2003 | James Baker | P | Amy Woodruff | PE |
| | Lynn Olson | S/T | Stephen Loop | D |
| 2004 | Amy Woodruff | P | Lynn Olson | PE |
| | Dustin Commons | S/T | James Baker | D |
| 2005 | Lynn Olson | P | Dustin Commons | PE |
| | Jason Ritchie | S/T | James Baker | D |
| 2006 | Dustin Commons | P | Jason Ritchie | PE |
| | Chris Canfield | S/T | Lynn Olson | D |
| 2007 | Jason Ritchie | P | Chris Canfield | PE |
| | David Waite | S/T | Lynn Olson | D |
| 2008 | Chris Canfield | P | David Waite | PE |
| | Lew Venard | S/T | Dustin Commons | D |
| 2009 | David Waite | P | Lew Venard | PE |
| | Katey Levihn | S/T | Dustin Commons | D |



SW Chapter Engineering Week (1958 & 2010)



ISPE SUPPORTED PROGRAMS



**ENGINEERS
WEEK® 2010**

Engineers' Week

The third full week of February is recognized as **National Engineers' Week** and was started in 1951 as a way to call attention to engineer's contributions to society. The celebration was begun by the National Society of Professional Engineers in conjunction with President George Washington's Birthday as President Washington is considered by many as the nation's first engineer, notably for his survey work. Engineering week banquets are held by a number of the ISPE Chapters recognizing newly licensed engineers and top engineering students during this week.

MATHCOUNTS®

MATHCOUNTS

MATHCOUNTS is a national math coaching and competition program for 6th, 7th, and 8th grade students created and run by the National Society of Professional Engineers, the National Council for Teachers of Mathematics and the CNA Insurance Company in 1984/85. MATHCOUNTS provides an opportunity for students to have fun while exploring areas of math that they may not see in their normal class curriculum. Four Idaho Chapter competitions are held in February with a State Competition held each March in Boise. The top four students from the State Competition represent Idaho at the National Competition in May. Students are recognized for their achievements on both team and individual bases.



Future City

Begun nationally in 1992 and in Idaho in 2005, the National Engineers Week Future City Competition brings science, technology and math alive in a hands-on environment for 6th, 7th and 8th graders. The program integrates project-based learning across curriculums and includes computer simulation. Students working with an engineer mentor develop a computer model of a Future City using SimCity software, address a real world engineering issue through a research essay, build a scale model of a Future City and present their Future City to a panel of engineering judges at the Regional Competition during January in Boise. The top team represents Idaho at the National Competition in Washington D.C. during National Engineers Week.

ISPE SUPPORTED PROGRAMS

ISPE Foundation

The ISPE Foundation was established in February 1988. It was created to promote “the advancement of educational, charitable, and scientific purposes that fill human needs, primarily but not exclusively those of the education of youth”. One of its specific duties is “to raise, maintain, and administer funds for the purpose of financing the ISPE state and chapter MATHCOUNTS contests”.

All voting members of ISPE are also members of the ISPE Foundation. It is governed by a board of directors with between 9 and 15 members, that consists of five at-large members and at least one member from each of the four ISPE chapters. Regular meetings of the Foundation board are held at least twice each year, with one of these meetings held in conjunction with the ISPE Annual Membership Meeting.

The Foundation is a non-profit organization, exempt from federal income taxes under Section 501 (C) (3) of the Internal Revenue Code.



Qualifications Based Selection (QBS) Facilitator Council

The Qualifications Based Selection (QBS) Facilitator Council is a coalition of many design and professional service volunteers formed to bring information about qualifications based selection to cities and counties in Idaho. The coalition began meeting in 1998 shortly after the passage of a new state law that requires this method of selection when hiring a professional in design or construction projects. As of 1999, the coalition received money from a national partnership created by the American Consulting Engineers Council, the American Institute of Architects, the American Public Works Association, the American Society of Landscape Architects and the National Society of Professional Engineers. The Idaho coalition matched this grant with local funds contributed by each of its members, creating a budget to enable the QBS Facilitator Council to offer many services to cities and counties at no cost.

ISPE AUXILIARY

In March 1956 at the ISPE State Convention ladies luncheon, the idea of an organization was discussed to further the scope of friendships among the wives of the engineers and help the Southwest Chapter of ISPE with social functions. From that group of ladies the auxiliary was officially started. Wonderful memories and friendships developed that lasted throughout the lifetimes of these early members. As the roles of women changed over the years, the society changed as well and the group dissolved in 2007 but not before more than 50 years of contributions to society, local community organizations and the engineering profession.

ISPE AUXILIARY PRESIDENTS 1956-2006

| <u>PRESIDENT</u> | <u>YEAR(S)</u> | <u>PRESIDENT</u> | <u>YEAR(S)</u> |
|--------------------|----------------|-------------------|----------------|
| Opal Smith | 1956 | Jody Milhollin | 1979 |
| Marian Griffiths | 1957 | Sue Bennion | 1980 |
| Maxine Briggs | 1958 | Sue Krumsick | 1981 |
| Roberta Laragan | 1959 | Pat Stapley | 1982 |
| Hazel Harris | 1960 | Barbara Ragsdale | 1983 |
| Shirley Briggs | 1961 | Susie Pitkin | 1984 |
| Edithe Barclay | 1962 | Dawn Bingham | 1985 |
| Frances Nelson | 1963 | Kay Pon-Brown | 1986 |
| Tommie DeAtley | 1964 | Evelyn Nuffer | 1987 |
| Jackie Christensen | 1965 | Judith Ancell | 1988-89 |
| Mary Smith | 1966 | Mary Lou Clements | 1990 |
| Ethel Benson | 1967 | Maxine Briggs | 1991 |
| Marge Moore | 1968 | Jane Bahr | 1992 |
| Harriet Reynolds | 1969 | Jenny Taylor | 1993 |
| Ginger Purdy | 1970 | Pat Stapley | 1994 |
| Mrs. Tom Curtis | 1971 | Donna Picione | 1995 |
| Roberta Cory | 1972 | DaNeal Leishman | 1996 |
| Ruth Kanemasu | 1973 | Wendy Reeder | 1997 |
| Whitney Brozovich | 1974 | Pat Stapley | 1998-2000 |
| Vicki Johnson | 1975 | Sharon Sullivan | 2001 |
| Pat Stapley | 1976 | Pat Stapley | 2002 |
| Sue Walker | 1977 | Sharon Sullivan | 2003-2007 |
| Jannette Peterson | 1978 | | |

THE ORIGINAL
"ENGINETTES"



PROFESSIONAL ENGINEERING IN IDAHO FACTS

1ST LICENSE HOLDERS IN THEIR DISCIPLINE IN IDAHO

| DISCIPLINE | No. | NAME | DATE |
|------------------------------------|--------|-----------------------|------|
| Acoustical (AcE) | N/A | N/A | N/A |
| Aeronautical (AerE) | N/A | N/A | N/A |
| Agricultural (AgE) | #477 | Hobart Beresford | 1939 |
| Architectural (ArE) | #11764 | William Charles Birza | 2005 |
| Chemical (ChE) | # 542 | Paul Coburn Ward | 1942 |
| Civil (CE) | #206 | A. B. Brown | 1916 |
| | #1 | Will H. Gibson | 1919 |
| Control Systems (CsE) | #8131 | Calvin Harvey Neal | 1996 |
| Electrical (EE) | #488 | James S. McNair | 1937 |
| | #479 | Lincoln Bouillon | 1939 |
| Environmental (EnvE) | #7769 | John Frederick Keck | 1995 |
| Fire Protection (FpE) | #10779 | Scott R. Creighton | 1992 |
| Forestry (ForE) | #10779 | Greg J. Zartman | 2002 |
| Geological (GeoE) | #1629 | Terry R. Howard | 1937 |
| | #1736 | Roger C. Banghart | 1966 |
| Industrial (IE) | #8714 | Sidney W. Carter | 1997 |
| Manufacturing (ManE) | #8485 | Ronald O. Soren | 1997 |
| Mechanical (ME) | # 489 | George S. Armstrong | 1939 |
| Metallurgical (MetE) | #1563 | Robert F. Fischer | 1964 |
| Mining/Mineral (MinE) | #630 | Ernest Oberbillig | 1947 |
| Naval Architecture & Marine (NamE) | | N/A | N/A |
| Nuclear (NE) | #3325 | Varada Charyulu | 1977 |
| PE/LS | #269 | Carl E. Tappan | 1920 |
| Petroleum (PetE) | #10364 | Theresa C. Cornett | 2001 |
| Structural (SE) | #1344 | Lawrence H. Peden | 1960 |

OTHER FIRSTS, FACTS & NOTES OF DISTINCTION

- NSPE Founder one of the original members of ISE
- 1st female member of ISPE in 1966 Mrs. Robert Griffiths (Draftswoman)
- 1st female professional engineer in Idaho - Malati Charyulu Kesaree (#2231) in 1971
- 1st Engineering Corporation Registered in Idaho - The Austin Company in 1963
- Approximate Number of Registered Professional Engineers in Idaho between 1919 and 2010 = 14198
- Approximate Number of Engineering Corporations Registered in Idaho between 1963 and 2010 = 2576
- Civil Engineers made up approximately 470 of the 1st licenses

ENGINEERING EDUCATION IN IDAHO



UNIVERSITY OF IDAHO COLLEGE OF ENGINEERING

When the University of Idaho (UI) first opened in 1892, civil engineering instruction was part of the College of Applied Science and the engineering program remained there until 1907. On June 11, 1896, four degrees were awarded, with Arthur P. Adair and Charles L. Kirtley receiving the first Bachelor of Civil Engineering degrees. However, Arthur Adair is considered the first engineering student as he was the only student accepted with a college entrance requirement. The rest of the students who registered on the first registration day of October 3, 1892 all entered the Preparatory Department.

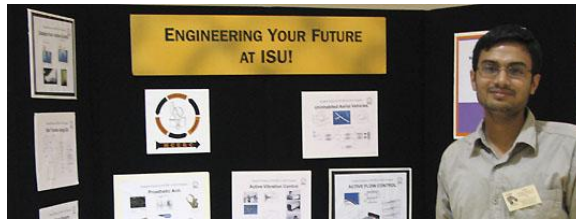
UI's College of Engineering was established in 1907 and began to function in 1908. However, official action by the Regents creating the College of Engineering as we know it today did not occur until October 27, 1911. Charles Newton Little was appointed by the Regents as the first Dean of the College of Engineering in October, 1911, also serving concurrently as the Head of Civil Engineering.

Interesting Historical Facts

- In December 1913 the equipment inventory, aside from buildings and library, of the five engineering departments comprised:
 - Civil Engineering \$8611.28
 - Mining Engineering \$25, 679.16
 - Mechanical Engineering \$12,078.49
 - Electrical Engineering \$9,110.13
 - Agricultural Engineering \$960.10
- Grace Fenton Robertson, BSCE (1938), was the first woman graduate of the UI College of Engineering.
- Allen S. Janssen, ISPE Past President and Dean of the UI College of Engineering from 1946-1967, was selected by the ISPE as the state's "Engineer of the Year" for his "service, ability and devotion to the cause of engineering education, and his interest and service in the civic affairs of state and community."
- ISPE Hall of Fame Past President George Russell served as Assistant or Associate Dean of the College of Engineering from 1967 to 1985.
- ISPE Past Presidents with connections to the University include James W. Martin, professor of agricultural engineering and William P. Barnes, professor of mechanical engineering. Both served as Chairs of the ISPE Professional Engineers in Education (PEE) Practice Group along with James Milligan and James DeShazer also from the University of Idaho.



IDAHO STATE UNIVERSITY COLLEGE OF ENGINEERING



The College of Engineering has its origins linked with the beginning of Idaho State University, then the Academy of Idaho. Two of the first four graduates in 1904 were Civil Engineers. In 1915, the Academy of Idaho became the Idaho Technical Institute and students studying engineering could complete the first two years of a Bachelor of Science degree and transfer to the University of Idaho for completion of the degree. During the 1950's, Associate Degrees were offered in a variety of engineering disciplines, including agricultural, chemical, civil, electrical, mechanical and mining and metallurgy engineering.

The Bachelor of Science in pre-engineering was first established in 1963 as Idaho State College became Idaho State University. In 1965, the Idaho Legislature amended a statute limiting engineering programs at ISU. The change allowed ISU to establish a Bachelor of Science degree in General Engineering with a Nuclear Engineering option. The following year, a Master of Science degree in Nuclear Science and Engineering was established. In 1967, the first two students received B.S. degrees in General Engineering.

Engineering became an independent department in 1968 with the creation of the Department of Engineering and Nuclear Science and the School of Engineering in 1975. In 1985 the B.S. in General Engineering received national accreditation under the Accreditation Board for Engineering and Technology (ABET). The College of Engineering was established in 1986 by Dean Dr. V. P. "Harry" Charyulu. In 1997, students could specialize their B.S. degree in either Civil, Electrical or Mechanical engineering. B.S. degrees in Computer Science and Nuclear Engineering were added in 1999 and 2005 respectively. By 2000, all B.S. programs in the College of Engineering were accredited. Along with the five B.S. degree programs, graduate programs include M.S. degrees in Civil Engineering, Environmental Engineering, Measurement and Control Engineering, Mechanical Engineering and Nuclear Science and Engineering. Ph.D. degrees include Engineering and Applied Science and Nuclear Science and Engineering programs.

Student enrollment now stands at almost 700 students. At present, there are 22 full-time faculty teaching in the College of Engineering. Research funding is about \$2.5 million and increasing steadily.

ISPE State past Presidents include former ISU professors John Bennion and Dewitt Tal Neill, both of whom also served as Chairs of the ISPE Professional Engineers in Education (PEE) Practice Group. Former ISU Dean and current Professor Jay Kunze also helped organize ISPE's 5th Chapter (the National Reactor Testing Station) from 1972-1975.

BOISE STATE UNIVERSITY

College of Engineering

BOISE STATE UNIVERSITY COLLEGE OF ENGINEERING

Engineering was initially a pre-engineering program at Boise Junior College in the 1950s. In spring of 1988, UI established an off-campus center in Boise to provide expanded undergraduate offerings.

In 1995, a group of business leaders, educators and legislators decided that greater access to engineering education was critical to the economic future of Idaho. By fall, lobbying efforts culminated in a vote by the Idaho State Board of Education to form the College of Engineering at BSU. In 1996, classes leading to a four-year baccalaureate degree in three fields were offered.

One year later, in 1997, the College of Engineering was created including departments of electrical, mechanical and civil engineering, construction management and instructional and performance technology. Lynn Russell was hired as the college's founding dean. Enrollment for fall semester was 320.

By 2006, enrollment had jumped to 1,616 and departments were added for computer science and for materials science and engineering. The mechanical engineering program was renamed the Department of Mechanical and Biomedical Engineering.

By 2009, combined enrollment for undergraduate and graduate studies was 1,881 students. BSU now offers 24 degree options ranging from bachelors through doctoral in seven academic departments. Research expenditures have tripled in the past five years. Additionally, through research, outreach and internship programs, the BSU College of Engineering affords many opportunities to advance in the knowledge of engineering. For instance, nearly 10,000 K-12 students are brought to campus annually for engineering outreach programs, such as Discover Engineering Day and 83% of undergraduate students experience hands-on research and internship opportunities.

ISPE Past State Presidents include former BSU Dean of the College of Engineering Norm Dahm who also chaired the ISPE Professional Engineers in Education (PEE) Practice Group.

ISPE SUSTAINING ORGANIZATIONS



J.M. MILLER ENGINEERING INC



J-U-B ENGINEERS, Inc.

ENGINEERS SURVEYORS PLANNERS



Professional Engineers, Land Surveyors and Planners
314 Badiola St. Caldwell, ID 83605
Ph (208) 454-0256 Fax (208) 454-0979



SMARTER PROCESS INC



Engineers Creed

As a Professional Engineer, I dedicate my professional knowledge and skill to the advancement and betterment of human welfare.

I pledge:

To give the utmost of performance;

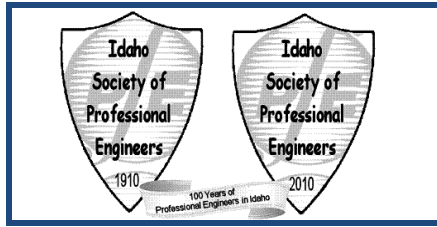
To participate in none but honest enterprise;

To live and work according to the laws of man and the highest standards of professional conduct;

To place service before profit, the honor and standing of the profession before personal advantage, and the public welfare above all other considerations.

In humility and with need for Divine Guidance, I make this pledge.

Adopted by NSPE – June 1954



SPONSORS



B&A Engineers, Inc.
Consulting Engineers & Surveyors



Engineering
INCORPORATED



GEOTEK



Stanley Consultants INC.

ISPE SOUTHWEST CHAPTER



URS



WHPacific

Joe Canning, P.E.
Sherwin (Sam) Barton, P.E.
George F. Eidam, P.E.
William F. Johnson, P.E.
John J. Harper, P.E.

Idaho Society of Professional Engineers
PO Box 170239
Boise, ID 83717-0239
208-426-0636
Fax: 208-426-0639
E-Mail: ispe@idahospe.org
Web Site: www.IdahoSPE.org